

Datasheet for ABIN656752
anti-SMCP antibody (C-Term)[Go to Product page](#)

1 Image

Overview

Quantity:	400 µL
Target:	SMCP
Binding Specificity:	AA 68-97, C-Term
Reactivity:	Human
Host:	Rabbit
Clonality:	Polyclonal
Conjugate:	This SMCP antibody is un-conjugated
Application:	Western Blotting (WB)

Product Details

Immunogen:	This SMCP antibody is generated from rabbits immunized with a KLH conjugated synthetic peptide between 68-97 amino acids from the C-terminal region of human SMCP.
Clone:	RB32498
Isotype:	Ig Fraction
Purification:	This antibody is purified through a protein A column, followed by peptide affinity purification.

Target Details

Target:	SMCP
Alternative Name:	SMCP (SMCP Products)
Background:	Sperm mitochondria differ in morphology and subcellular localization from those of somatic

Target Details

cells. They are elongated, flattened, and arranged circumferentially to form a helical coiled sheath in the midpiece of the sperm flagellum. The protein encoded by this gene localizes to the capsule associated with the mitochondrial outer membranes and is thought to function in the organization and stabilization of the helical structure of the sperm's mitochondrial sheath.

Molecular Weight: 12767

Gene ID: 4184

NCBI Accession: [NP_109588](#)

UniProt: [P49901](#)

Application Details

Application Notes: WB: 1:1000

Restrictions: For Research Use only

Handling

Format: Liquid

Buffer: Purified polyclonal antibody supplied in PBS with 0.09 % (W/V) sodium azide.

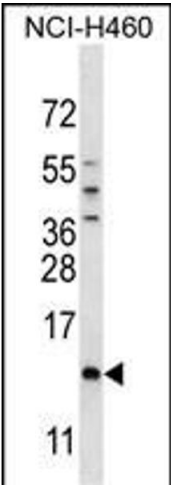
Preservative: Sodium azide

Precaution of Use: This product contains Sodium azide: a POISONOUS AND HAZARDOUS SUBSTANCE which should be handled by trained staff only.

Storage: 4 °C, -20 °C

Storage Comment: SMCP Antibody (C-term) can be refrigerated at 2-8 °C for up to 6 months. For long term storage, place the at -20 °C.

Expiry Date: 6 months



Western Blotting

Image 1. SMCP Antibody (C-term) (ABIN656752 and ABIN2845974) western blot analysis in NCI- cell line lysates (35 µg/lane). This demonstrates the SMCP antibody detected the SMCP protein (arrow).