

Datasheet for ABIN656756  
**anti-GPM6A antibody (C-Term)**[Go to Product page](#)

## 2 Images

## Overview

Quantity:	400 µL
Target:	GPM6A
Binding Specificity:	AA 246-275, C-Term
Reactivity:	Human
Host:	Rabbit
Clonality:	Polyclonal
Conjugate:	This GPM6A antibody is un-conjugated
Application:	Western Blotting (WB), Immunohistochemistry (Paraffin-embedded Sections) (IHC (p))

## Product Details

Immunogen:	This GPM6A antibody is generated from rabbits immunized with a KLH conjugated synthetic peptide between 246-275 amino acids from the C-terminal region of human GPM6A.
Clone:	RB32534
Isotype:	Ig Fraction
Predicted Reactivity:	B, M, Rat
Purification:	This antibody is purified through a protein A column, followed by peptide affinity purification.

## Target Details

Target:	GPM6A
Alternative Name:	GPM6A ( <a href="#">GPM6A Products</a> )

## Target Details

Molecular Weight:	31210
Gene ID:	2823
NCBI Accession:	<a href="#">NP_001248377</a> , <a href="#">NP_005268</a> , <a href="#">NP_963885</a> , <a href="#">NP_963886</a>
UniProt:	<a href="#">P51674</a>

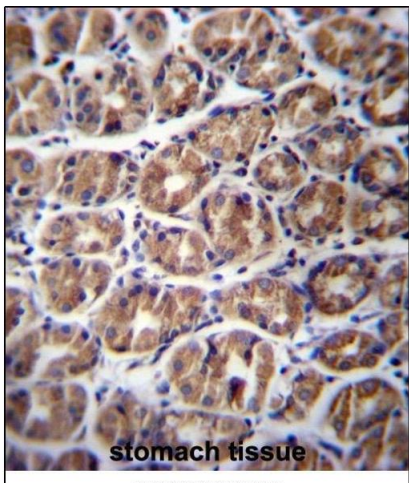
## Application Details

Application Notes:	WB: 1:1000. IHC-P: 1:10~50
Restrictions:	For Research Use only

## Handling

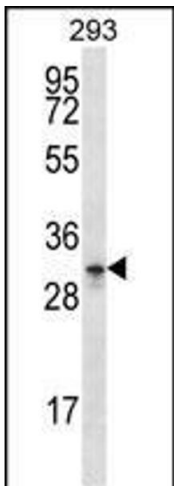
Format:	Liquid
Buffer:	Purified polyclonal antibody supplied in PBS with 0.09 % (W/V) sodium azide.
Preservative:	Sodium azide
Precaution of Use:	This product contains Sodium azide: a POISONOUS AND HAZARDOUS SUBSTANCE which should be handled by trained staff only.
Storage:	4 °C, -20 °C
Storage Comment:	GPM6A Antibody (C-term) can be refrigerated at 2-8 °C for up to 6 months. For long term storage, place the at -20 °C.
Expiry Date:	6 months

## Images



### Immunohistochemistry (Paraffin-embedded Sections)

**Image 1.** GA Antibody (C-term) (ABIN656756 and ABIN2845978) immunohistochemistry analysis in formalin fixed and paraffin embedded human stomach tissue followed by peroxidase conjugation of the secondary antibody and DAB staining. This data demonstrates the use of GA Antibody (C-term) for immunohistochemistry. Clinical relevance has not been evaluated.



#### Western Blotting

**Image 2.** GA Antibody (C-term) (ABIN656756 and ABIN2845978) western blot analysis in 293 cell line lysates (35 µg/lane). This demonstrates the GA antibody detected the GA protein (arrow).