



[Go to Product page](#)

Datasheet for ABIN6567594
anti-Tubulin, beta 8 antibody

3 Images

Overview

Quantity:	200 µL
Target:	Tubulin, beta 8 (TUBB8)
Reactivity:	Human, Mouse, Rat
Host:	Rabbit
Clonality:	Polyclonal
Conjugate:	This Tubulin, beta 8 antibody is un-conjugated
Application:	Western Blotting (WB), Immunohistochemistry (IHC)

Product Details

Immunogen:	A synthetic peptide of human TUBB8
Isotype:	IgG
Purification:	Affinity purification

Target Details

Target:	Tubulin, beta 8 (TUBB8)
Alternative Name:	TUBB8 (TUBB8 Products)
Background:	Synonyms: bA631M21.2, Class VIII beta tubulin, HSA10p15 beta tubulin 4Q, RP11-631M21.2, TBB8, TUBB8, Tubulin beta 8, Tubulin beta 8 chain, Tubulin beta 8 class VIII, Tubulin beta-8 chain Background: The protein encoded by this gene represents the primary beta-tubulin subunit of oocytes and the early embryo. Defects in this gene, which is primate-specific, are a cause of

Target Details

oocyte maturation defect 2 and infertility.

Molecular Weight: Observed_MW: 54kDa
Calculated_MW: 49kDa

Gene ID: 347688

UniProt: [Q3ZCM7](#)

Application Details

Application Notes: WB 1:500 - 1:2000 IHC 1:50 - 1:200

Restrictions: For Research Use only

Handling

Concentration: 1 mg/mL

Buffer: Buffer: PBS with 0.02 % sodium azide, 50 % glycerol, pH 7.3.

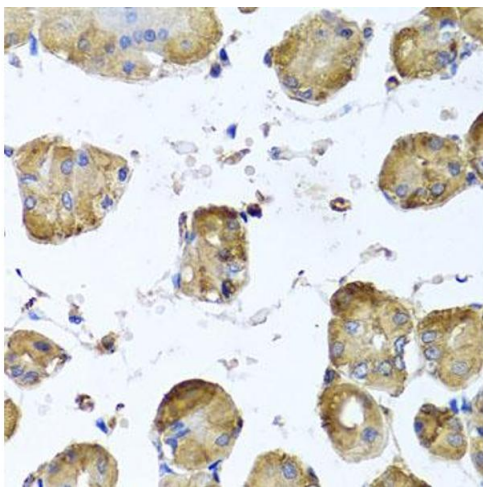
Preservative: Sodium azide

Precaution of Use: This product contains Sodium azide: a POISONOUS AND HAZARDOUS SUBSTANCE which should be handled by trained staff only.

Storage: -20 °C

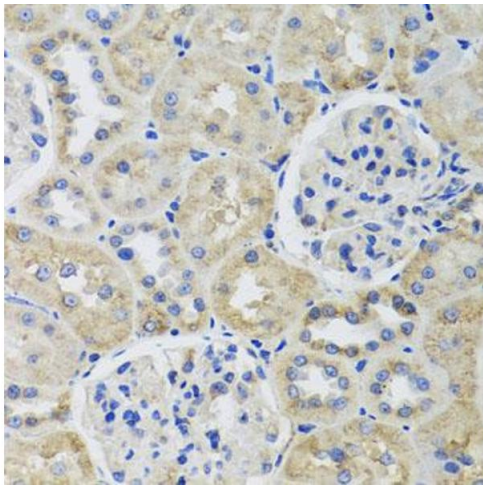
Storage Comment: Store at -20°C. Avoid freeze / thaw cycles.

Images



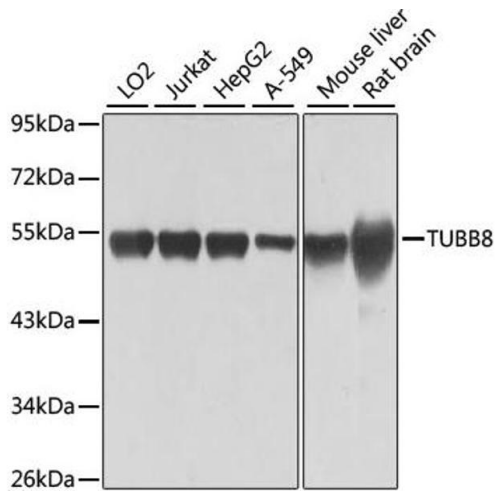
Immunohistochemistry

Image 1. Immunohistochemistry of paraffin-embedded human stomach using TUBB8 antibody.



Immunohistochemistry

Image 2. Immunohistochemistry of paraffin-embedded rat kidney using TUBB8 antibody.



Western Blotting

Image 3. Western blot analysis of extracts of various cell lines, using TUBB8 antibody.