

Datasheet for ABIN656764
anti-LOXL3 antibody (C-Term)

3 Images

[Go to Product page](#)

Overview

Quantity:	400 µL
Target:	LOXL3
Binding Specificity:	AA 715-744, C-Term
Reactivity:	Human
Host:	Rabbit
Clonality:	Polyclonal
Application:	Western Blotting (WB), Immunohistochemistry (Paraffin-embedded Sections) (IHC (p))

Product Details

Immunogen:	This LOXL3 antibody is generated from rabbits immunized with a KLH conjugated synthetic peptide between 715-744 amino acids from the C-terminal region of human LOXL3.
Clone:	RB32569
Isotype:	Ig Fraction
Predicted Reactivity:	M
Purification:	This antibody is purified through a protein A column, followed by peptide affinity purification.

Target Details

Target:	LOXL3
Alternative Name:	LOXL3 (LOXL3 Products)
Background:	This gene encodes a member of the lysyl oxidase gene family. The prototypic member of the

Target Details

family is essential to the biogenesis of connective tissue, encoding an extracellular copper-dependent amine oxidase that catalyses the first step in the formation of crosslinks in collagens and elastin. A highly conserved amino acid sequence at the C-terminus end appears to be sufficient for amine oxidase activity, suggesting that each family member may retain this function. The N-terminus is poorly conserved and may impart additional roles in developmental regulation, senescence, tumor suppression, cell growth control, and chemotaxis to each member of the family. Alternatively spliced transcript variants of this gene have been reported but their full-length nature has not been determined.

Molecular Weight: 83166

Gene ID: 84695

NCBI Accession: [NP_115992](#)

UniProt: [P58215](#)

Application Details

Application Notes: WB: 1:2000. WB: 1:2000. IHC-P: 1:10~50

Restrictions: For Research Use only

Handling

Format: Liquid

Buffer: Purified polyclonal antibody supplied in PBS with 0.09 % (W/V) sodium azide.

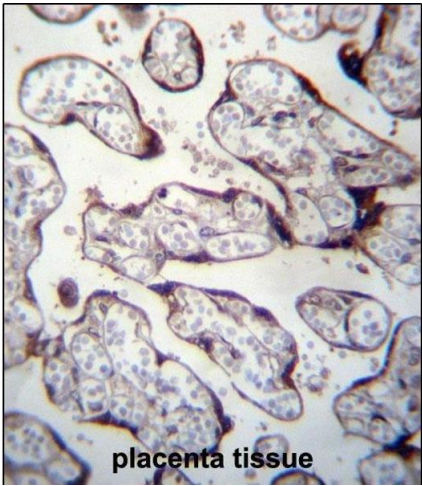
Preservative: Sodium azide

Precaution of Use: This product contains Sodium azide: a POISONOUS AND HAZARDOUS SUBSTANCE which should be handled by trained staff only.

Storage: 4 °C,-20 °C

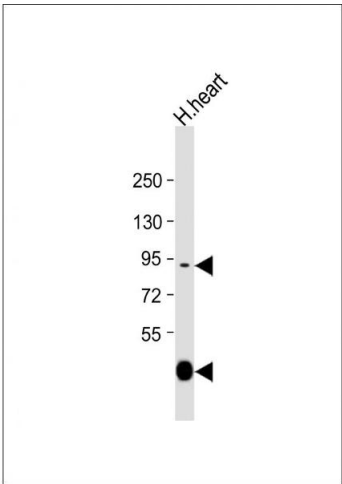
Storage Comment: LOXL3 Antibody (C-term) can be refrigerated at 2-8 °C for up to 6 months. For long term storage, place the at -20 °C.

Expiry Date: 6 months



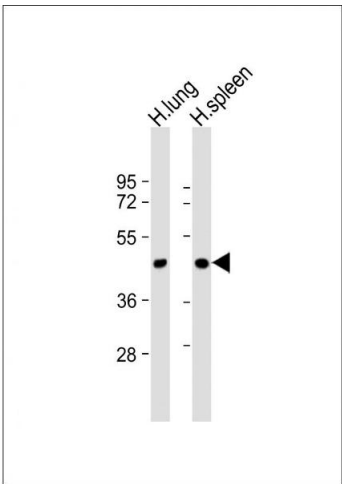
Immunohistochemistry (Paraffin-embedded Sections)

Image 1. LOXL3 Antibody (C-term) (ABIN656764 and ABIN2845985) immunohistochemistry analysis in formalin fixed and paraffin embedded human placenta tissue followed by peroxidase conjugation of the secondary antibody and DAB staining. This data demonstrates the use of LOXL3 Antibody (C-term) for immunohistochemistry. Clinical relevance has not been evaluated.



Western Blotting

Image 2. Anti-LOXL3 Antibody (C-term) at 1:2000 dilution + human heart lysate. Lysates/proteins at 20 µg per lane. Secondary Goat Anti-Rabbit IgG, (H+L), Peroxidase conjugated at 1/10000 dilution. Predicted band size : 83 kDa. Blocking/Dilution buffer: 5 % NFDM/TBST.



Western Blotting

Image 3. All lanes : Anti-LOXL3 Antibody (C-term) at 1:2000 dilution. Lane 1: human lung lysate. Lane 2: human spleen lysate. Lysates/proteins at 20 µg per lane. Secondary Goat Anti-Rabbit IgG, (H+L), Peroxidase conjugated at 1/10000 dilution. Predicted band size : 83 kDa. Blocking/Dilution buffer: 5 % NFDM/TBST.