

Datasheet for ABIN656766  
**anti-DOC2A antibody (AA 277-306)**[Go to Product page](#)

## 3 Images

## Overview

Quantity:	400 µL
Target:	DOC2A
Binding Specificity:	AA 277-306
Reactivity:	Human
Host:	Rabbit
Clonality:	Polyclonal
Conjugate:	This DOC2A antibody is un-conjugated
Application:	Western Blotting (WB), Flow Cytometry (FACS), Immunohistochemistry (Paraffin-embedded Sections) (IHC (p))

## Product Details

Immunogen:	This DOC2A antibody is generated from rabbits immunized with a KLH conjugated synthetic peptide between 277-306 amino acids from the Central region of human DOC2A.
Clone:	RB32573
Isotype:	Ig Fraction
Predicted Reactivity:	M, Rat
Purification:	This antibody is purified through a protein A column, followed by peptide affinity purification.

## Target Details

Target:	DOC2A
---------	-------

## Target Details

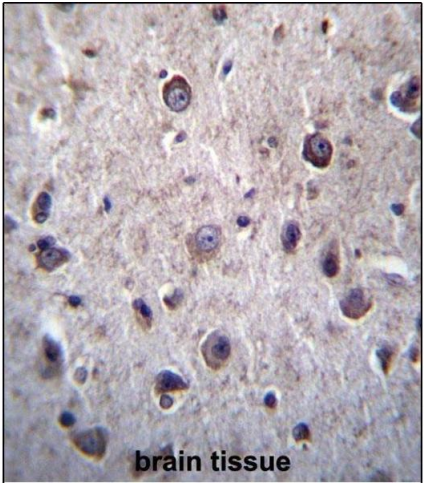
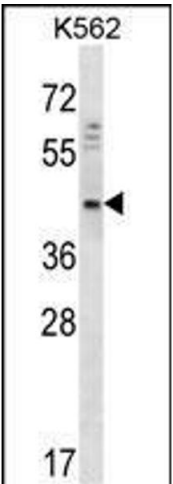
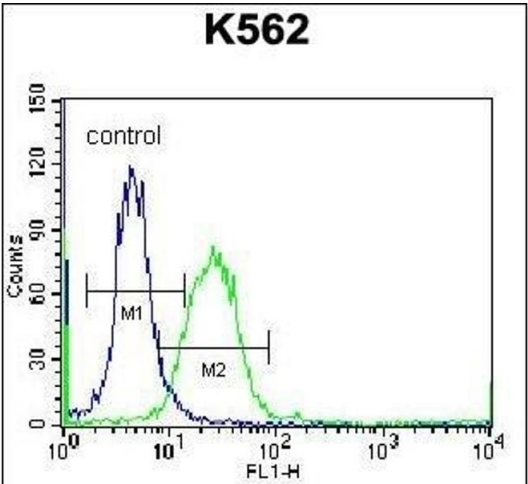
Alternative Name:	DOC2A ( <a href="#">DOC2A Products</a> )
Background:	There are at least two protein isoforms of the Double C2 protein, namely alpha (DOC2A) and beta (DOC2B), which contain two C2-like domains. DOC2A and DOC2B are encoded by different genes, these genes are at times confused with the unrelated DAB2 gene which was initially named DOC-2. DOC2A is mainly expressed in brain and is suggested to be involved in Ca(2+)-dependent neurotransmitter release.
Molecular Weight:	43959
Gene ID:	8448
NCBI Accession:	<a href="#">NP_001268991</a> , <a href="#">NP_001268992</a> , <a href="#">NP_001268997</a> , <a href="#">NP_003577</a>
UniProt:	<a href="#">Q14183</a>
Pathways:	<a href="#">Synaptic Vesicle Exocytosis</a>

## Application Details

Application Notes:	WB: 1:1000. IHC-P: 1:10~50. FC: 1:10~50
Restrictions:	For Research Use only

## Handling

Format:	Liquid
Buffer:	Purified polyclonal antibody supplied in PBS with 0.09 % (W/V) sodium azide.
Preservative:	Sodium azide
Precaution of Use:	This product contains Sodium azide: a POISONOUS AND HAZARDOUS SUBSTANCE which should be handled by trained staff only.
Storage:	4 °C,-20 °C
Storage Comment:	DOC2A Antibody (Center) can be refrigerated at 2-8 °C for up to 6 months. For long term storage, place the at -20 °C.
Expiry Date:	6 months



### Flow Cytometry

**Image 1.** DOC2A Antibody (Center) (ABIN656766 and ABIN2845987) flow cytometric analysis of K562 cells (right histogram) compared to a negative control cell (left histogram). FITC-conjugated donkey-anti-rabbit secondary antibodies were used for the analysis.

### Western Blotting

**Image 2.** DOC2A Antibody (Center) (ABIN656766 and ABIN2845987) western blot analysis in K562 cell line lysates (35 µg/lane). This demonstrates the DOC2A antibody detected the DOC2A protein (arrow).

### Immunohistochemistry (Paraffin-embedded Sections)

**Image 3.** DOC2A Antibody (Center) (ABIN656766 and ABIN2845987) immunohistochemistry analysis in formalin fixed and paraffin embedded human brain tissue followed by peroxidase conjugation of the secondary antibody and DAB staining. This data demonstrates the use of DOC2A Antibody (Center) for immunohistochemistry. Clinical relevance has not been evaluated.