

Datasheet for ABIN656770  
**anti-HEPACAM antibody (C-Term)**[Go to Product page](#)

## 1 Image

## Overview

|                      |                       |
|----------------------|-----------------------|
| Quantity:            | 400 µL                |
| Target:              | HEPACAM               |
| Binding Specificity: | AA 298-327, C-Term    |
| Reactivity:          | Human                 |
| Host:                | Rabbit                |
| Clonality:           | Polyclonal            |
| Application:         | Western Blotting (WB) |

## Product Details

|               |  |
|---------------|--|
| Immunogen:    | This HEPACAM antibody is generated from rabbits immunized with a KLH conjugated synthetic peptide between 298-327 amino acids from the C-terminal region of human HEPACAM. |
| Clone:        | RB32583  |
| Isotype:      | Ig Fraction  |
| Purification: | This antibody is purified through a protein A column, followed by peptide affinity purification.   |

## Target Details

|                   |  |
|-------------------|--|
| Target:           | HEPACAM  |
| Alternative Name: | HEPACAM ( <a href="#">HEPACAM Products</a> )   |
| Background:       | HEPACAM is involved in regulating cell motility and cell-matrix interactions. May inhibit cell growth through suppression of cell proliferation. |

## Target Details

|                   |                           |
|-------------------|---------------------------|
| Molecular Weight: | 46026                     |
| Gene ID:          | 220296                    |
| NCBI Accession:   | <a href="#">NP_689935</a> |
| UniProt:          | <a href="#">Q14CZ8</a>    |

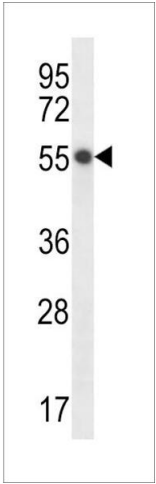
## Application Details

|                    |                       |
|--------------------|-----------------------|
| Application Notes: | WB: 1:1000            |
| Restrictions:      | For Research Use only |

## Handling

|                    |   |
|--------------------|---|
| Format:            | Liquid  |
| Buffer:            | Purified polyclonal antibody supplied in PBS with 0.09 % (W/V) sodium azide.  |
| Preservative:      | Sodium azide  |
| Precaution of Use: | This product contains Sodium azide: a POISONOUS AND HAZARDOUS SUBSTANCE which should be handled by trained staff only.  |
| Storage:           | 4 °C, -20 °C  |
| Storage Comment:   | HEPACAM Antibody (C-term) can be refrigerated at 2-8 °C for up to 6 months. For long term storage, place the at -20 °C. |
| Expiry Date:       | 6 months  |

## Images



### Western Blotting

**Image 1.** HEC Antibody (C-term) (ABIN656770 and ABIN2845990) western blot analysis in HepG2 cell line lysates (35 µg/lane). This demonstrates the HEC antibody detected the HEC protein (arrow).