

Datasheet for ABIN656775
anti-OXA1L antibody (C-Term)

2 Images

[Go to Product page](#)

Overview

Quantity:	400 µL
Target:	OXA1L
Binding Specificity:	AA 361-390, C-Term
Reactivity:	Human
Host:	Rabbit
Clonality:	Polyclonal
Application:	Western Blotting (WB), Flow Cytometry (FACS)

Product Details

Immunogen:	This OXA1L antibody is generated from rabbits immunized with a KLH conjugated synthetic peptide between 361-390 amino acids from the C-terminal region of human OXA1L.
Clone:	RB32603
Isotype:	Ig Fraction
Purification:	This antibody is purified through a protein A column, followed by peptide affinity purification.

Target Details

Target:	OXA1L
Alternative Name:	OXA1L (OXA1L Products)
Background:	OXA1L is required for the insertion of integral membrane proteins into the mitochondrial inner membrane. Essential for the activity and assembly of cytochrome oxidase.

Target Details

Molecular Weight:	48548
Gene ID:	5018
NCBI Accession:	NP_005006
UniProt:	Q15070

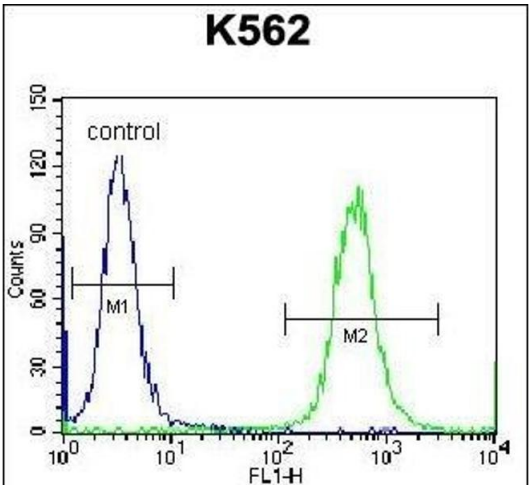
Application Details

Application Notes:	WB: 1:1000. FC: 1:10~50
Restrictions:	For Research Use only

Handling

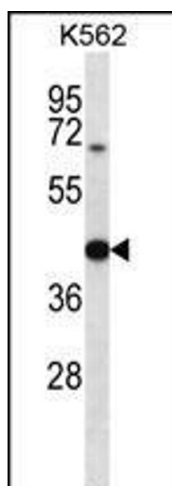
Format:	Liquid
Buffer:	Purified polyclonal antibody supplied in PBS with 0.09 % (W/V) sodium azide.
Preservative:	Sodium azide
Precaution of Use:	This product contains Sodium azide: a POISONOUS AND HAZARDOUS SUBSTANCE which should be handled by trained staff only.
Storage:	4 °C,-20 °C
Storage Comment:	OXA1L Antibody (C-term) can be refrigerated at 2-8 °C for up to 6 months. For long term storage, place the at -20 °C.
Expiry Date:	6 months

Images



Flow Cytometry

Image 1. OXA1L Antibody (C-term) (ABIN656775 and ABIN2845994) flow cytometric analysis of K562 cells (right histogram) compared to a negative control cell (left histogram).FITC-conjugated donkey-anti-rabbit secondary antibodies were used for the analysis.



Western Blotting

Image 2. OXA1L Antibody (C-term) (ABIN656775 and ABIN2845994) western blot analysis in K562 cell line lysates (35 µg/lane). This demonstrates the OXA1L antibody detected the OXA1L protein (arrow).