

Datasheet for ABIN656780
anti-TBC1D22A antibody (C-Term)[Go to Product page](#)

2 Images

Overview

Quantity:	400 µL
Target:	TBC1D22A
Binding Specificity:	AA 447-476, C-Term
Reactivity:	Human
Host:	Rabbit
Clonality:	Polyclonal
Application:	Western Blotting (WB), Immunohistochemistry (Paraffin-embedded Sections) (IHC (p))

Product Details

Immunogen:	This TBC1D22A antibody is generated from rabbits immunized with a KLH conjugated synthetic peptide between 447-476 amino acids from the C-terminal region of human TBC1D22A.
Clone:	RB32614
Isotype:	Ig Fraction
Predicted Reactivity:	Pr
Purification:	This antibody is purified through a protein A column, followed by peptide affinity purification.

Target Details

Target:	TBC1D22A
Alternative Name:	TBC1D22A (TBC1D22A Products)

Target Details

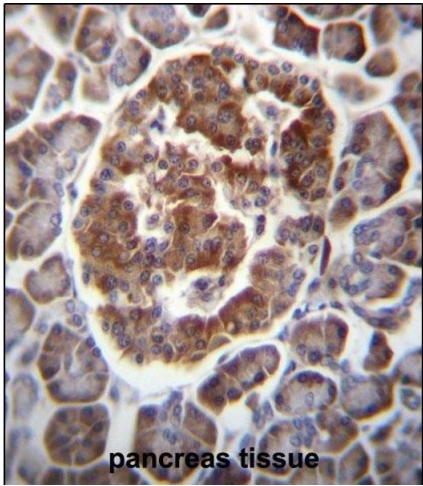
Background:	TBC1D22A may act as a GTPase-activating protein for Rab family protein(s) (By similarity).
Molecular Weight:	59121
Gene ID:	25771
NCBI Accession:	NP_055161
UniProt:	Q8WUA7

Application Details

Application Notes:	WB: 1:1000. IHC-P: 1:10~50
Restrictions:	For Research Use only

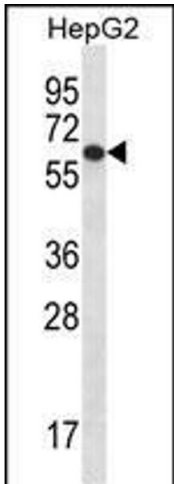
Handling

Format:	Liquid
Buffer:	Purified polyclonal antibody supplied in PBS with 0.09 % (W/V) sodium azide.
Preservative:	Sodium azide
Precaution of Use:	This product contains Sodium azide: a POISONOUS AND HAZARDOUS SUBSTANCE which should be handled by trained staff only.
Storage:	4 °C,-20 °C
Storage Comment:	TBC1D22A Antibody (C-term) can be refrigerated at 2-8 °C for up to 6 months. For long term storage, place the at -20 °C.
Expiry Date:	6 months



Immunohistochemistry (Paraffin-embedded Sections)

Image 1. TBC1D22A Antibody (C-term) (ABIN656780 and ABIN2845998) immunohistochemistry analysis in formalin fixed and paraffin embedded human pancreas tissue followed by peroxidase conjugation of the secondary antibody and DAB staining. This data demonstrates the use of TBC1D22A Antibody (C-term) for immunohistochemistry. Clinical relevance has not been evaluated.



Western Blotting

Image 2. TBC1D22A Antibody (C-term) (ABIN656780 and ABIN2845998) western blot analysis in HepG2 cell line lysates (35 µg/lane). This demonstrates the TBC1D22A antibody detected the TBC1D22A protein (arrow).