

Datasheet for ABIN656782
anti-SCHIP1 antibody (AA 90-118)[Go to Product page](#)

3 Images

Overview

Quantity:	400 µL
Target:	SCHIP1
Binding Specificity:	AA 90-118
Reactivity:	Human
Host:	Rabbit
Clonality:	Polyclonal
Application:	Western Blotting (WB), Flow Cytometry (FACS), Immunohistochemistry (Paraffin-embedded Sections) (IHC (p))

Product Details

Immunogen:	This SCHIP1 antibody is generated from rabbits immunized with a KLH conjugated synthetic peptide between 90-118 amino acids from the Central region of human SCHIP1.
Clone:	RB32627
Isotype:	Ig Fraction
Purification:	This antibody is purified through a protein A column, followed by peptide affinity purification.

Target Details

Target:	SCHIP1
Alternative Name:	SCHIP1 (SCHIP1 Products)
Background:	SCHIP1 is a novel coiled-coil protein that specifically associates with schwannomin in vitro and in vivo. Within its coiled-coil region, this protein is homologous to human FEZ proteins and the

Target Details

related *Caenorhabditis elegans* gene product UNC-76.

Gene ID:	29970
NCBI Accession:	NP_001184036 , NP_001184037 , NP_001184038 , NP_001184043 , NP_055390
UniProt:	Q9P0W5

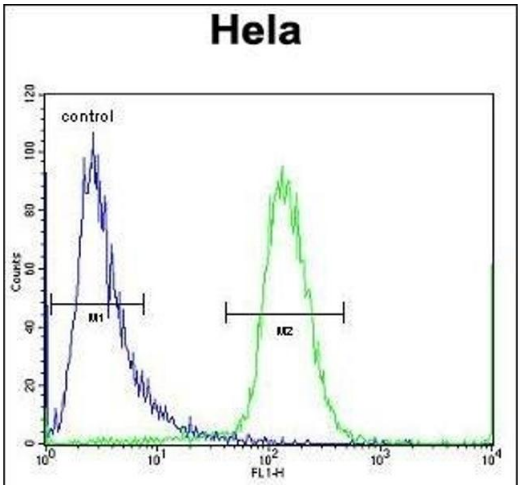
Application Details

Application Notes:	WB: 1:1000. IHC-P: 1:10~50. FC: 1:10~50
Restrictions:	For Research Use only

Handling

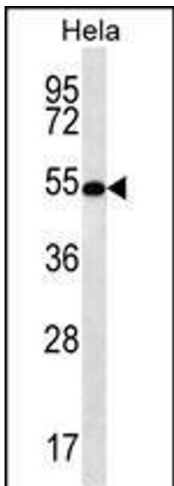
Format:	Liquid
Buffer:	Purified polyclonal antibody supplied in PBS with 0.09 % (W/V) sodium azide.
Preservative:	Sodium azide
Precaution of Use:	This product contains Sodium azide: a POISONOUS AND HAZARDOUS SUBSTANCE which should be handled by trained staff only.
Storage:	4 °C, -20 °C
Storage Comment:	SCHIP1 Antibody (Center) can be refrigerated at 2-8 °C for up to 6 months. For long term storage, place the at -20 °C.
Expiry Date:	6 months

Images



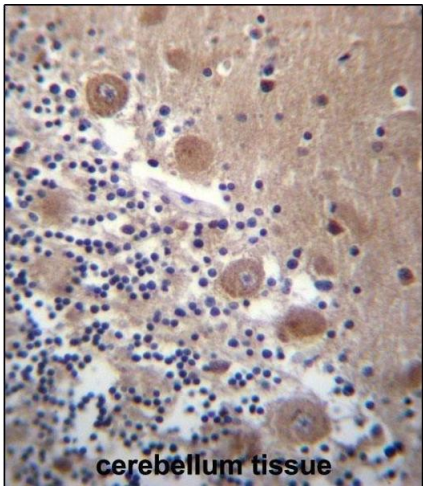
Flow Cytometry

Image 1. SCHIP1 Antibody (Center) (ABIN656782 and ABIN2846000) flow cytometric analysis of Hela cells (right histogram) compared to a negative control cell (left histogram). FITC-conjugated goat-anti-rabbit secondary antibodies were used for the analysis.



Western Blotting

Image 2. SCHIP1 Antibody (Center) (ABIN656782 and ABIN2846000) western blot analysis in HeLa cell line lysates (35 µg/lane). This demonstrates the SCHIP1 antibody detected the SCHIP1 protein (arrow).



Immunohistochemistry (Paraffin-embedded Sections)

Image 3. SCHIP1 Antibody (Center) (ABIN656782 and ABIN2846000) immunohistochemistry analysis in formalin fixed and paraffin embedded human cerebellum tissue followed by peroxidase conjugation of the secondary antibody and DAB staining. This data demonstrates the use of SCHIP1 Antibody (Center) for immunohistochemistry. Clinical relevance has not been evaluated.