



[Go to Product page](#)

Datasheet for ABIN656785
anti-GUF1 antibody (N-Term)

3 Images

Overview

Quantity:	400 µL
Target:	GUF1
Binding Specificity:	AA 183-212, N-Term
Reactivity:	Human
Host:	Rabbit
Clonality:	Polyclonal
Conjugate:	This GUF1 antibody is un-conjugated
Application:	Western Blotting (WB), Immunohistochemistry (Paraffin-embedded Sections) (IHC (p))

Product Details

Immunogen:	This GUF1 antibody is generated from rabbits immunized with a KLH conjugated synthetic peptide between 183-212 amino acids from the N-terminal region of human GUF1.
Clone:	RB32635
Isotype:	Ig Fraction
Purification:	This antibody is purified through a protein A column, followed by peptide affinity purification.

Target Details

Target:	GUF1
Alternative Name:	GUF1 (GUF1 Products)
Molecular Weight:	74328

Target Details

Gene ID: 60558

NCBI Accession: [NP_068746](#)

UniProt: [Q8N442](#)

Application Details

Application Notes: WB: 1:1000. WB: 1:1000. IHC-P: 1:10~50

Restrictions: For Research Use only

Handling

Format: Liquid

Buffer: Purified polyclonal antibody supplied in PBS with 0.09 % (W/V) sodium azide.

Preservative: Sodium azide

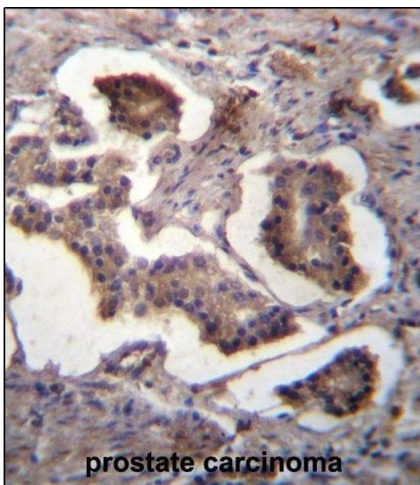
Precaution of Use: This product contains Sodium azide: a POISONOUS AND HAZARDOUS SUBSTANCE which should be handled by trained staff only.

Storage: 4 °C,-20 °C

Storage Comment: GUF1 Antibody (N-term) can be refrigerated at 2-8 °C for up to 6 months. For long term storage, place the at -20 °C.

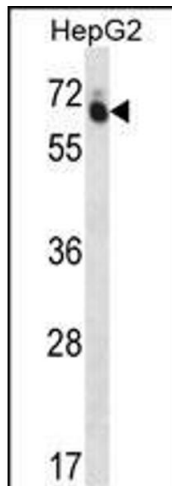
Expiry Date: 6 months

Images



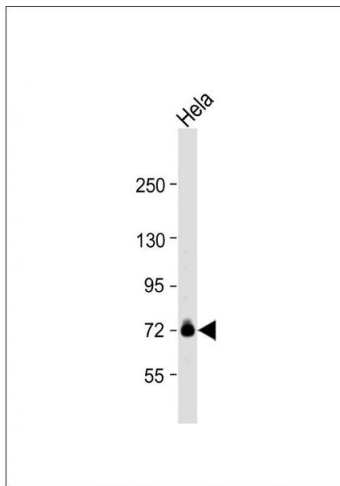
Immunohistochemistry (Paraffin-embedded Sections)

Image 1. GUF1 Antibody (N-term) (ABIN656785 and ABIN2846003) immunohistochemistry analysis in formalin fixed and paraffin embedded human prostate carcinoma followed by peroxidase conjugation of the secondary antibody and DAB staining. This data demonstrates the use of GUF1 Antibody (N-term) for immunohistochemistry. Clinical relevance has not been evaluated.



Western Blotting

Image 2. GUF1 Antibody (N-term) (ABIN656785 and ABIN2846003) western blot analysis in HepG2 cell line lysates (35 µg/lane). This demonstrates the GUF1 antibody detected the GUF1 protein (arrow).



Western Blotting

Image 3. Anti-GUF1 Antibody (N-term) at 1:1000 dilution + HeLa whole cell lysate Lysates/proteins at 20 µg per lane. Secondary Goat Anti-Rabbit IgG, (H+L), Peroxidase conjugated at 1/10000 dilution. Predicted band size : 74 kDa Blocking/Dilution buffer: 5 % NFDm/TBST.