

Datasheet for ABIN656786  
**anti-YIPF1 antibody (N-Term)**

## 2 Images

[Go to Product page](#)

## Overview

Quantity:	400 µL
Target:	YIPF1
Binding Specificity:	AA 34-63, N-Term
Reactivity:	Human
Host:	Rabbit
Clonality:	Polyclonal
Conjugate:	This YIPF1 antibody is un-conjugated
Application:	Western Blotting (WB), Immunohistochemistry (Paraffin-embedded Sections) (IHC (p))

## Product Details

Immunogen:	This YIPF1 antibody is generated from rabbits immunized with a KLH conjugated synthetic peptide between 34-63 amino acids from the N-terminal region of human YIPF1.
Clone:	RB32636
Isotype:	Ig Fraction
Purification:	This antibody is purified through a protein A column, followed by peptide affinity purification.

## Target Details

Target:	YIPF1
Alternative Name:	YIPF1 ( <a href="#">YIPF1 Products</a> )
Background:	YIPF1 is a multi-pass membrane protein. It belongs to the YIP1 family. The exact function of

## Target Details

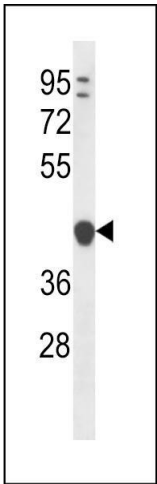
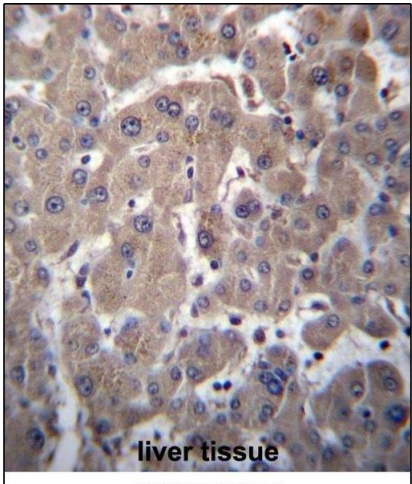
	YIPF1 remains unknown. There are two named isoforms.
Molecular Weight:	34277
Gene ID:	54432
NCBI Accession:	<a href="#">NP_061855</a>
UniProt:	<a href="#">Q9Y548</a>

## Application Details

Application Notes:	WB: 1:1000. IHC-P: 1:10~50
Restrictions:	For Research Use only

## Handling

Format:	Liquid
Buffer:	Purified polyclonal antibody supplied in PBS with 0.09 % (W/V) sodium azide.
Preservative:	Sodium azide
Precaution of Use:	This product contains Sodium azide: a POISONOUS AND HAZARDOUS SUBSTANCE which should be handled by trained staff only.
Storage:	4 °C,-20 °C
Storage Comment:	YIPF1 Antibody (N-term) can be refrigerated at 2-8 °C for up to 6 months. For long term storage, place the at -20 °C.
Expiry Date:	6 months



**Immunohistochemistry (Paraffin-embedded Sections)**

**Image 1.** YIPF1 Antibody (N-term) (ABIN656786 and ABIN2846004) immunohistochemistry analysis in formalin fixed and paraffin embedded human liver tissue followed by peroxidase conjugation of the secondary antibody and DAB staining. This data demonstrates the use of YIPF1 Antibody (N-term) for immunohistochemistry. Clinical relevance has not been evaluated.

**Western Blotting**

**Image 2.** YIPF1 Antibody (N-term) (ABIN656786 and ABIN2846004) western blot analysis in ZR-75-1 cell line lysates (35 µg/lane). This demonstrates the YIPF1 antibody detected the YIPF1 protein (arrow).