

Datasheet for ABIN656787
anti-Ladinin 1 antibody (N-Term)



[Go to Product page](#)

2 Images

Overview

Quantity:	400 µL
Target:	Ladinin 1 (LAD1)
Binding Specificity:	AA 143-172, N-Term
Reactivity:	Human
Host:	Rabbit
Clonality:	Polyclonal
Conjugate:	This Ladinin 1 antibody is un-conjugated
Application:	Western Blotting (WB), Immunohistochemistry (Paraffin-embedded Sections) (IHC (p))

Product Details

Immunogen:	This LAD1 antibody is generated from rabbits immunized with a KLH conjugated synthetic peptide between 143-172 amino acids from the N-terminal region of human LAD1.
Clone:	RB32637
Isotype:	Ig Fraction
Purification:	This antibody is purified through a protein A column, followed by peptide affinity purification.

Target Details

Target:	Ladinin 1 (LAD1)
Alternative Name:	LAD1 (LAD1 Products)
Background:	The protein encoded by this gene may be an anchoring filament that is a component of

Target Details

basement membranes. It may contribute to the stability of the association of the epithelial layers with the underlying mesenchyme.

Molecular Weight: 57131

Gene ID: 3898

NCBI Accession: [NP_005549](#)

UniProt: [O00515](#)

Application Details

Application Notes: WB: 1:1000. IHC-P: 1:10~50

Restrictions: For Research Use only

Handling

Format: Liquid

Buffer: Purified polyclonal antibody supplied in PBS with 0.09 % (W/V) sodium azide.

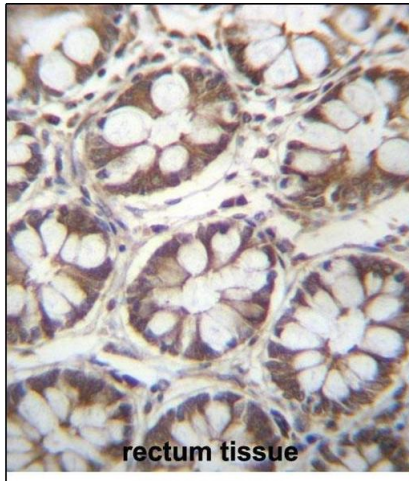
Preservative: Sodium azide

Precaution of Use: This product contains Sodium azide: a POISONOUS AND HAZARDOUS SUBSTANCE which should be handled by trained staff only.

Storage: 4 °C,-20 °C

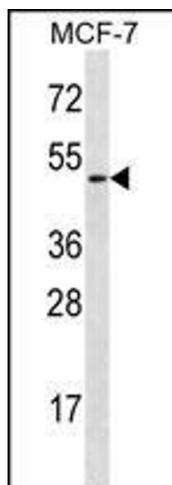
Storage Comment: LAD1 Antibody (N-term) can be refrigerated at 2-8 °C for up to 6 months. For long term storage, place the at -20 °C.

Expiry Date: 6 months



Immunohistochemistry (Paraffin-embedded Sections)

Image 1. LAD1 Antibody (N-term) (ABIN656787 and ABIN2846006) immunohistochemistry analysis in formalin fixed and paraffin embedded human rectum tissue followed by peroxidase conjugation of the secondary antibody and DAB staining. This data demonstrates the use of LAD1 Antibody (N-term) for immunohistochemistry. Clinical relevance has not been evaluated.



Western Blotting

Image 2. LAD1 Antibody (N-term) (ABIN656787 and ABIN2846006) western blot analysis in MCF-7 cell line lysates (35 µg/lane). This demonstrates the LAD1 antibody detected the LAD1 protein (arrow).