

Datasheet for ABIN656789
anti-GLCCI1 antibody (AA 226-255)[Go to Product page](#)

2 Images

Overview

Quantity:	400 µL
Target:	GLCCI1
Binding Specificity:	AA 226-255
Reactivity:	Human
Host:	Rabbit
Clonality:	Polyclonal
Conjugate:	This GLCCI1 antibody is un-conjugated
Application:	Western Blotting (WB), Immunohistochemistry (Paraffin-embedded Sections) (IHC (p))

Product Details

Immunogen:	This GLCCI1 antibody is generated from rabbits immunized with a KLH conjugated synthetic peptide between 226-255 amino acids from the Central region of human GLCCI1.
Clone:	RB32643
Isotype:	Ig Fraction
Predicted Reactivity:	M
Purification:	This antibody is purified through a protein A column, followed by peptide affinity purification.

Target Details

Target:	GLCCI1
Alternative Name:	GLCCI1 (GLCCI1 Products)

Target Details

Molecular Weight:	58024
Gene ID:	113263
NCBI Accession:	NP_612435
UniProt:	Q86VQ1

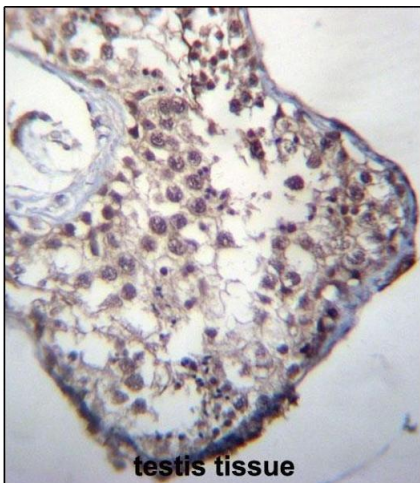
Application Details

Application Notes:	WB: 1:1000. IHC-P: 1:10~50
Restrictions:	For Research Use only

Handling

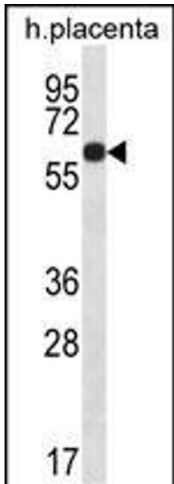
Format:	Liquid
Buffer:	Purified polyclonal antibody supplied in PBS with 0.09 % (W/V) sodium azide.
Preservative:	Sodium azide
Precaution of Use:	This product contains Sodium azide: a POISONOUS AND HAZARDOUS SUBSTANCE which should be handled by trained staff only.
Storage:	4 °C, -20 °C
Storage Comment:	GLCCI1 Antibody (Center) can be refrigerated at 2-8 °C for up to 6 months. For long term storage, place the at -20 °C.
Expiry Date:	6 months

Validation report #102069 for Western Blotting (WB)



Immunohistochemistry (Paraffin-embedded Sections)

Image 1. GLCCI1 Antibody (Center) (ABIN656789 and ABIN2846008) immunohistochemistry analysis in formalin fixed and paraffin embedded human testis tissue followed by peroxidase conjugation of the secondary antibody and DAB staining. This data demonstrates the use of GLCCI1 Antibody (Center) for immunohistochemistry. Clinical relevance has not been evaluated.



Western Blotting

Image 2. GLCCI1 Antibody (Center) (ABIN656789 and ABIN2846008) western blot analysis in human placenta tissue lysates (35 µg/lane). This demonstrates the GLCCI1 antibody detected the GLCCI1 protein (arrow).