

Datasheet for ABIN656790

**anti-ALDH3B2 antibody (C-Term)****2** Images[Go to Product page](#)

## Overview

Quantity:	400 µL
Target:	ALDH3B2
Binding Specificity:	AA 252-280, C-Term
Reactivity:	Human
Host:	Rabbit
Clonality:	Polyclonal
Conjugate:	This ALDH3B2 antibody is un-conjugated
Application:	Western Blotting (WB), Immunohistochemistry (Paraffin-embedded Sections) (IHC (p))

## Product Details

Immunogen:	This ALDH3B2 antibody is generated from rabbits immunized with a KLH conjugated synthetic peptide between 252-280 amino acids from the C-terminal region of human ALDH3B2.
Clone:	RB32644
Isotype:	Ig Fraction
Purification:	This antibody is purified through a protein A column, followed by peptide affinity purification.

## Target Details

Target:	ALDH3B2
Alternative Name:	ALDH3B2 ( <a href="#">ALDH3B2 Products</a> )
Background:	This gene encodes a member of the aldehyde dehydrogenase family, a group of isozymes that

## Target Details

may play a major role in the detoxification of aldehydes generated by alcohol metabolism and lipid peroxidation. The gene of this particular family member is over 10 kb in length. The expression of these transcripts is restricted to the salivary gland among the human tissues examined. Alternate transcriptional splice variants have been characterized.

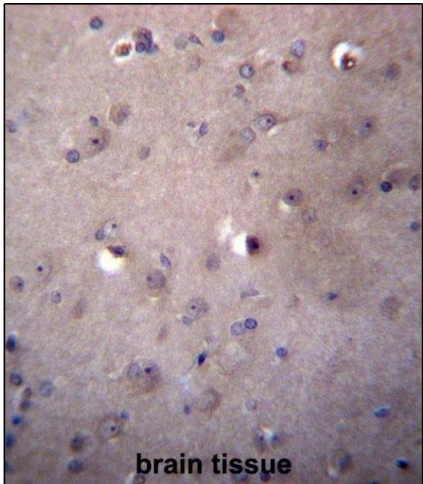
Molecular Weight:	42635
Gene ID:	222
NCBI Accession:	<a href="#">NP_000686</a> , <a href="#">NP_001026786</a>
UniProt:	<a href="#">P48448</a>

## Application Details

Application Notes:	WB: 1:1000. IHC-P: 1:10~50
Restrictions:	For Research Use only

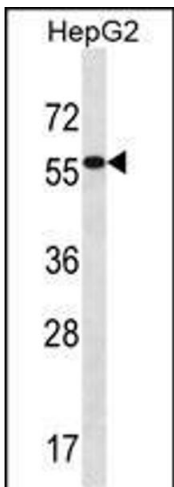
## Handling

Format:	Liquid
Buffer:	Purified polyclonal antibody supplied in PBS with 0.09 % (W/V) sodium azide.
Preservative:	Sodium azide
Precaution of Use:	This product contains Sodium azide: a POISONOUS AND HAZARDOUS SUBSTANCE which should be handled by trained staff only.
Storage:	4 °C,-20 °C
Storage Comment:	ALDH3B2 Antibody (C-term) can be refrigerated at 2-8 °C for up to 6 months. For long term storage, place the at -20 °C.
Expiry Date:	6 months



**Immunohistochemistry (Paraffin-embedded Sections)**

**Image 1.** ALDH3B2 Antibody (C-term) (ABIN656790 and ABIN2846009) immunohistochemistry analysis in formalin fixed and paraffin embedded human brain tissue followed by peroxidase conjugation of the secondary antibody and DAB staining. This data demonstrates the use of ALDH3B2 Antibody (C-term) for immunohistochemistry. Clinical relevance has not been evaluated.



**Western Blotting**

**Image 2.** ALDH3B2 Antibody (C-term) (ABIN656790 and ABIN2846009) western blot analysis in HepG2 cell line lysates (35 µg/lane). This demonstrates the ALDH3B2 antibody detected the ALDH3B2 protein (arrow).