

Datasheet for ABIN656791
anti-NUP35 antibody (C-Term)

2 Images

[Go to Product page](#)

Overview

Quantity:	400 µL
Target:	NUP35
Binding Specificity:	AA 289-318, C-Term
Reactivity:	Human
Host:	Rabbit
Clonality:	Polyclonal
Conjugate:	This NUP35 antibody is un-conjugated
Application:	Western Blotting (WB), Flow Cytometry (FACS)

Product Details

Immunogen:	This NUP35 antibody is generated from rabbits immunized with a KLH conjugated synthetic peptide between 289-318 amino acids from the C-terminal region of human NUP35.
Clone:	RB32647
Isotype:	Ig Fraction
Purification:	This antibody is purified through a protein A column, followed by peptide affinity purification.

Target Details

Target:	NUP35
Alternative Name:	NUP35 (NUP35 Products)
Background:	This gene encodes a member of the nucleoporin family. The protein is localized to the nuclear

Target Details

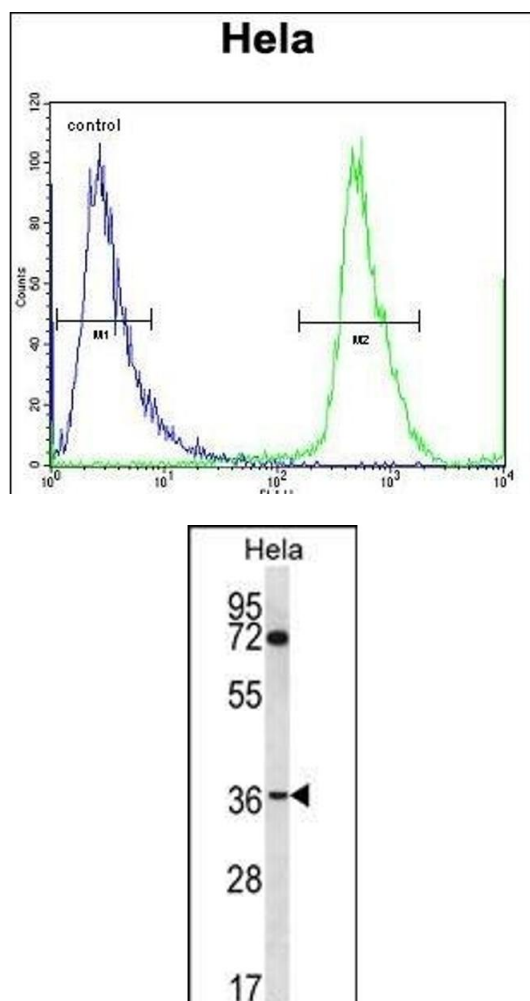
	rim and is part of the nuclear pore complex (NPC). All molecules entering or leaving the nucleus either diffuse through or are actively transported by the NPC.
Molecular Weight:	34774
Gene ID:	129401
NCBI Accession:	NP_612142
UniProt:	Q8NFH5

Application Details

Application Notes:	WB: 1:1000. FC: 1:10~50
Restrictions:	For Research Use only

Handling

Format:	Liquid
Buffer:	Purified polyclonal antibody supplied in PBS with 0.09 % (W/V) sodium azide.
Preservative:	Sodium azide
Precaution of Use:	This product contains Sodium azide: a POISONOUS AND HAZARDOUS SUBSTANCE which should be handled by trained staff only.
Storage:	4 °C,-20 °C
Storage Comment:	NUP35 Antibody (C-term) can be refrigerated at 2-8 °C for up to 6 months. For long term storage, place the at -20 °C.
Expiry Date:	6 months



Flow Cytometry

Image 1. NUP35 Antibody (C-term) (ABIN656791 and ABIN2846010) flow cytometric analysis of HeLa cells (right histogram) compared to a negative control cell (left histogram). FITC-conjugated goat-anti-rabbit secondary antibodies were used for the analysis.

Western Blotting

Image 2. NUP35 Antibody (C-term) (ABIN656791 and ABIN2846010) western blot analysis in HeLa cell line lysates (35 µg/lane). This demonstrates the NUP35 antibody detected the NUP35 protein (arrow).