

Datasheet for ABIN656799  
**anti-SP140 antibody (AA 272-301)**

## 3 Images

[Go to Product page](#)

## Overview

Quantity:	400 µL
Target:	SP140
Binding Specificity:	AA 272-301
Reactivity:	Human
Host:	Rabbit
Clonality:	Polyclonal
Conjugate:	This SP140 antibody is un-conjugated
Application:	Western Blotting (WB), Immunofluorescence (IF), Immunohistochemistry (Paraffin-embedded Sections) (IHC (p))

## Product Details

Immunogen:	This SP140 antibody is generated from rabbits immunized with a KLH conjugated synthetic peptide between 272-301 amino acids from the Central region of human SP140.
Clone:	RB32702
Isotype:	Ig Fraction
Purification:	This antibody is purified through a protein A column, followed by peptide affinity purification.

## Target Details

Target:	SP140
Alternative Name:	SP140 ( <a href="#">SP140 Products</a> )

## Target Details

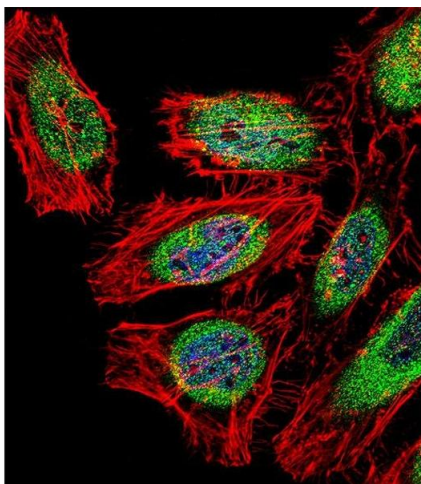
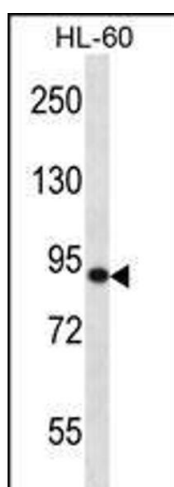
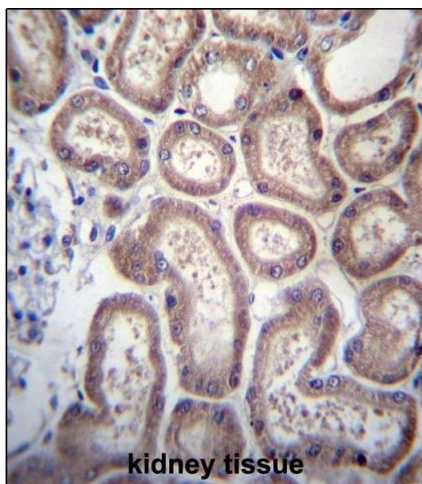
Background:	Component of the nuclear body, also known as nuclear domain 10, PML oncogenic domain, and KR body. May be involved in the pathogenesis of acute promyelocytic leukemia and viral infection.
Molecular Weight:	98223
Gene ID:	11262
NCBI Accession:	<a href="#">NP_001005176</a> , <a href="#">NP_001265380</a> , <a href="#">NP_001265381</a> , <a href="#">NP_001265382</a> , <a href="#">NP_009168</a>
UniProt:	<a href="#">Q13342</a>

## Application Details

Application Notes:	IF: 1:10~50. WB: 1:1000. IHC-P: 1:10~50
Restrictions:	For Research Use only

## Handling

Format:	Liquid
Buffer:	Purified polyclonal antibody supplied in PBS with 0.09 % (W/V) sodium azide.
Preservative:	Sodium azide
Precaution of Use:	This product contains Sodium azide: a POISONOUS AND HAZARDOUS SUBSTANCE which should be handled by trained staff only.
Storage:	4 °C, -20 °C
Storage Comment:	SP140 Antibody (Center) can be refrigerated at 2-8 °C for up to 6 months. For long term storage, place the at -20 °C.
Expiry Date:	6 months



### Immunohistochemistry (Paraffin-embedded Sections)

**Image 1.** S Antibody (Center) (ABIN656799 and ABIN2846017) immunohistochemistry analysis in formalin fixed and paraffin embedded human kidney tissue followed by peroxidase conjugation of the secondary antibody and DAB staining. This data demonstrates the use of S Antibody (Center) for immunohistochemistry. Clinical relevance has not been evaluated.

### Western Blotting

**Image 2.** S Antibody (Center) (ABIN656799 and ABIN2846017) western blot analysis in HL-60 cell line lysates (35 µg/lane). This demonstrates the S antibody detected the S protein (arrow).

### Immunofluorescence

**Image 3.** Fluorescent confocal image of HeLa cell stained with S Antibody (Center) (ABIN656799 and ABIN2846017). HeLa cells were fixed with 4 % PFA (20 min), permeabilized with Triton X-100 (0.1 %, 10 min), then incubated with S primary antibody (1:25, 1 h at 37 °C). For secondary antibody, Alexa Fluor® 488 conjugated donkey anti-rabbit antibody (green) was used (1:400, 50 min at 37 °C). Cytoplasmic actin was counterstained with Alexa Fluor® 555 (red) conjugated Phalloidin (7 units/mL, 1 h at 37 °C). Nuclei were counterstained with DAPI (blue) (10 µg/mL, 10 min). S immunoreactivity is localized to Cytoplasm and Nucleus significantly.