



Datasheet for ABIN656809  
**anti-CPN1 antibody (AA 210-240)**



[Go to Product page](#)

3 Images

Overview

Quantity:	400 µL
Target:	CPN1
Binding Specificity:	AA 210-240
Reactivity:	Human
Host:	Rabbit
Clonality:	Polyclonal
Application:	Western Blotting (WB), Flow Cytometry (FACS), Immunohistochemistry (Paraffin-embedded Sections) (IHC (p))

Product Details

Immunogen:	This CPN1 antibody is generated from rabbits immunized with a KLH conjugated synthetic peptide between 210-240 amino acids from the Central region of human CPN1.
Clone:	RB19021
Isotype:	Ig Fraction
Purification:	This antibody is prepared by Saturated Ammonium Sulfate (SAS) precipitation followed by dialysis against PBS.

Target Details

Target:	CPN1
Alternative Name:	CPN1 ( <a href="#">CPN1 Products</a> )
Background:	Carboxypeptidase N is a plasma metallo-protease that cleaves basic amino acids from the C

## Target Details

---

terminal of peptides and proteins. The enzyme is important in the regulation of peptides like kinins and anaphylatoxins, and has also been known as kininase-1 and anaphylatoxin inactivator. This enzyme is a tetramer comprised of two identical regulatory subunits and two identical catalytic subunits, this gene encodes the catalytic subunit. Mutations in this gene can be associated with angioedema or chronic urticaria resulting from carboxypeptidase N deficiency. [provided by RefSeq].

Molecular Weight: 52286

Gene ID: 1369

NCBI Accession: [NP\\_001299](#)

UniProt: [P15169](#)

Pathways: [Metabolism of Steroid Hormones and Vitamin D](#), [Steroid Hormone Biosynthesis](#), [Peptide Hormone Metabolism](#), [Regulation of Systemic Arterial Blood Pressure by Hormones](#), [C21-Steroid Hormone Metabolic Process](#)

## Application Details

---

Application Notes: WB: 1:1000. IHC-P: 1:10~50. FC: 1:10~50

Restrictions: For Research Use only

## Handling

---

Format: Liquid

Buffer: Purified polyclonal antibody supplied in PBS with 0.09 % (W/V) sodium azide.

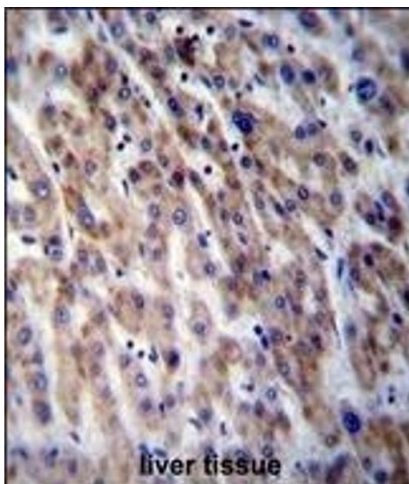
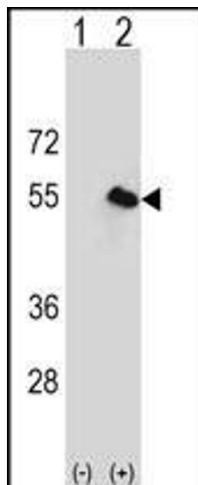
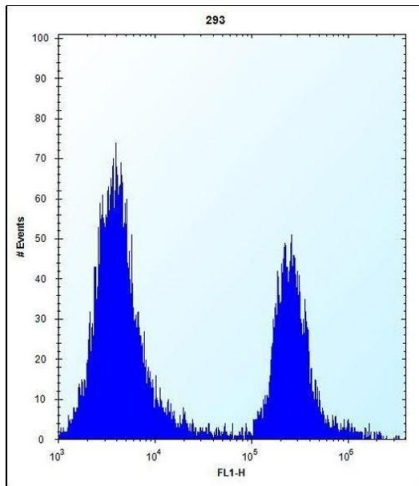
Preservative: Sodium azide

Precaution of Use: This product contains Sodium azide: a POISONOUS AND HAZARDOUS SUBSTANCE which should be handled by trained staff only.

Storage: 4 °C, -20 °C

Storage Comment: CPN1 Antibody (Center) can be refrigerated at 2-8 °C for up to 6 months. For long term storage, place the at -20 °C.

Expiry Date: 6 months



### Flow Cytometry

**Image 1.** CPN1 Antibody (Center) (ABIN656809 and ABIN2846023) flow cytometric analysis of 293 cells (right histogram) compared to a negative control cell (left histogram). FITC-conjugated goat-anti-rabbit secondary antibodies were used for the analysis.

### Western Blotting

**Image 2.** Western blot analysis of CPN1 (arrow) using rabbit polyclonal CPN1 Antibody (Center) (ABIN656809 and ABIN2846023). 293 cell lysates (2 µg/lane) either nontransfected (Lane 1) or transiently transfected (Lane 2) with the CPN1 gene.

### Immunohistochemistry (Paraffin-embedded Sections)

**Image 3.** CPN1 Antibody (Center) (ABIN656809 and ABIN2846023) immunohistochemistry analysis in formalin fixed and paraffin embedded human liver tissue followed by peroxidase conjugation of the secondary antibody and DAB staining. This data demonstrates the use of CPN1 Antibody (Center) for immunohistochemistry. Clinical relevance has not been evaluated.