



Datasheet for ABIN6568102  
**anti-TWF2 antibody**



[Go to Product page](#)

2 Images

Overview

Quantity:	200 µL
Target:	TWF2
Reactivity:	Human, Mouse
Host:	Rabbit
Clonality:	Polyclonal
Application:	Western Blotting (WB), Immunoprecipitation (IP)

Product Details

Immunogen:	Recombinant protein of human TWF2
Isotype:	IgG
Purification:	Affinity purification

Target Details

Target:	TWF2
Alternative Name:	TWF2 ( <a href="#">TWF2 Products</a> )
Background:	<p>Synonyms: A6 related protein,A6-related protein,A6r,A6RP,hA6RP,MSTP011,Protein tyrosine kinase 9 like,Protein tyrosine kinase 9-like,PTK 9L,PTK9L,PTK9L protein tyrosine kinase 9 like,TWF 2,Twf2,TWF2,Twinfilin 1 like protein,Twinfilin 2,Twinfilin actin binding protein homolog 2,Twinfilin like protein,Twinfilin-1-like protein,Twinfilin-2,Twinfilin2</p> <p>Background: The protein encoded by this gene was identified by its interaction with the catalytic domain of protein kinase C-zeta. The encoded protein contains an actin-binding site and an</p>

## Target Details

---

ATP-binding site. It is most closely related to twinfilin (PTK9), a conserved actin monomer-binding protein.

Molecular Weight: Observed\_MW: 40kDa  
Calculated\_MW: 39kDa

Gene ID: 11344

UniProt: [Q6IBS0](#)

Pathways: [Regulation of Actin Filament Polymerization](#), [Regulation of Cell Size](#), [Maintenance of Protein Location](#), [Toll-Like Receptors Cascades](#)

## Application Details

---

Application Notes: WB 1:500 - 1:2000 IP 1:20 - 1:50

Restrictions: For Research Use only

## Handling

---

Concentration: 1 mg/mL

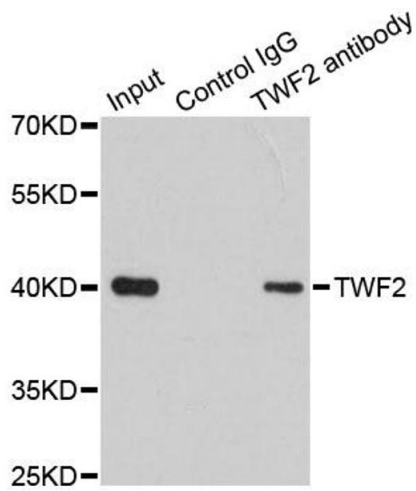
Buffer: Buffer: PBS with 0.02 % sodium azide, 50 % glycerol, pH 7.3.

Preservative: Sodium azide

Precaution of Use: This product contains Sodium azide: a POISONOUS AND HAZARDOUS SUBSTANCE which should be handled by trained staff only.

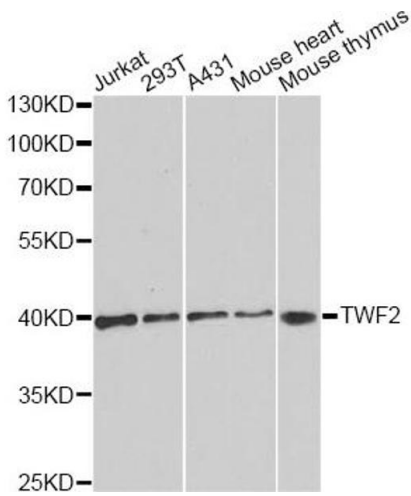
Storage: -20 °C

Storage Comment: Store at -20°C. Avoid freeze / thaw cycles.



### Western Blotting

**Image 1.** Immunoprecipitation analysis of 200ug extracts of 293T cells using 1ug TWF2 antibody.



### Western Blotting

**Image 2.** Western blot analysis of extracts of various cell lines, using TWF2 antibody.