



[Go to Product page](#)

Datasheet for ABIN656813  
**anti-FKBP7 antibody (C-Term)**

3 Images

### Overview

Quantity:	400 µL
Target:	FKBP7
Binding Specificity:	AA 195-224, C-Term
Reactivity:	Human
Host:	Rabbit
Clonality:	Polyclonal
Conjugate:	This FKBP7 antibody is un-conjugated
Application:	Western Blotting (WB), Flow Cytometry (FACS), Immunohistochemistry (Paraffin-embedded Sections) (IHC (p))

### Product Details

Immunogen:	This FKBP7 antibody is generated from rabbits immunized with a KLH conjugated synthetic peptide between 195-224 amino acids from the C-terminal region of human FKBP7.
Clone:	RB19319
Isotype:	Ig Fraction
Purification:	This antibody is purified through a protein A column, followed by peptide affinity purification.

### Target Details

Target:	FKBP7
Alternative Name:	FKBP7 ( <a href="#">FKBP7 Products</a> )

## Target Details

---

Background:	The protein encoded by this gene belongs to the FKBP-type peptidyl-prolyl cis/trans isomerase (PPIase) family. Members of this family exhibit PPIase activity and function as molecular chaperones. A similar protein in mouse is located in the endoplasmic reticulum and binds calcium.
Molecular Weight:	25794
Gene ID:	51661
NCBI Accession:	<a href="#">NP_001128684</a> , <a href="#">NP_851939</a>
UniProt:	<a href="#">Q9Y680</a>
Pathways:	<a href="#">SARS-CoV-2 Protein Interactome</a>

## Application Details

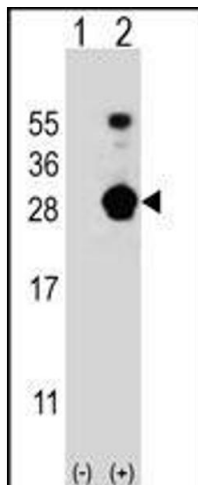
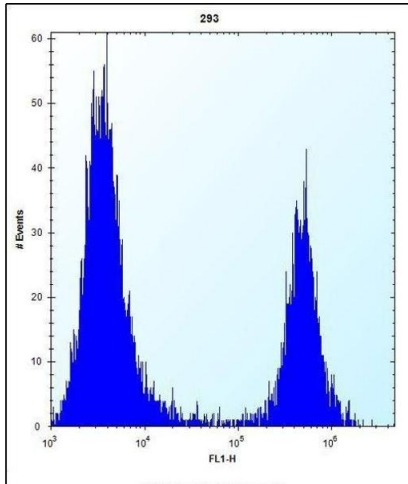
---

Application Notes:	WB: 1:1000. IHC-P: 1:10~50. FC: 1:10~50
Restrictions:	For Research Use only

## Handling

---

Format:	Liquid
Buffer:	Purified polyclonal antibody supplied in PBS with 0.09 % (W/V) sodium azide.
Preservative:	Sodium azide
Precaution of Use:	This product contains Sodium azide: a POISONOUS AND HAZARDOUS SUBSTANCE which should be handled by trained staff only.
Storage:	4 °C,-20 °C
Storage Comment:	FKBP7 Antibody (C-term) can be refrigerated at 2-8 °C for up to 6 months. For long term storage, place the at -20 °C.
Expiry Date:	6 months



### Flow Cytometry

**Image 1.** FKBP7 Antibody (C-term) (ABIN656813 and ABIN2846027) flow cytometric analysis of 293 cells (right histogram) compared to a negative control cell (left histogram). FITC-conjugated goat-anti-rabbit secondary antibodies were used for the analysis.

### Western Blotting

**Image 2.** Western blot analysis of FKBP7 (arrow) using rabbit polyclonal FKBP7 Antibody (C-term) (ABIN656813 and ABIN2846027). 293 cell lysates (2 µg/lane) either nontransfected (Lane 1) or transiently transfected (Lane 2) with the FKBP7 gene.

### Immunohistochemistry (Paraffin-embedded Sections)

**Image 3.** FKBP7 Antibody (C-term) (ABIN656813 and ABIN2846027) immunohistochemistry analysis in formalin fixed and paraffin embedded human placenta tissue followed by peroxidase conjugation of the secondary antibody and DAB staining. This data demonstrates the use of FKBP7 Antibody (C-term) for immunohistochemistry. Clinical relevance has not been evaluated.