

Datasheet for ABIN6568167

anti-FCRL5 antibody[Go to Product page](#)**1** Image

Overview

Quantity:	200 µL
Target:	FCRL5
Reactivity:	Human, Mouse, Rat
Host:	Rabbit
Clonality:	Polyclonal
Conjugate:	This FCRL5 antibody is un-conjugated
Application:	Western Blotting (WB)

Product Details

Immunogen:	Recombinant protein of human FCRL5
Isotype:	IgG
Purification:	Affinity purification

Target Details

Target:	FCRL5
Alternative Name:	CD307 (FCRL5 Products)
Background:	Synonyms: BXMAS1,CD307 antigen,CD307e,Fc receptor homolog 5,Fc receptor like 5,Fc receptor-like protein 5,FcR-like protein 5,FcRH5,FcRL5,FCRL5,Immune receptor translocation-associated protein 2,Immunoglobulin receptor translocation associated gene 2 protein,Immunoglobulin superfamily receptor translocation associated gene 2 protein,IRTA2,UNQ503/PRO820

Target Details

Background: This gene encodes a member of the immunoglobulin receptor superfamily and the Fc-receptor like family. This gene and several other Fc receptor-like gene members are clustered on the long arm of chromosome 1. The encoded protein is a single-pass type I membrane protein and contains 8 immunoglobulin-like C2-type domains. This gene is implicated in B cell development and lymphomagenesis. Alternatively spliced transcript variants encoding different isoforms have been identified.

Molecular Weight:	Observed_MW: 106kDa Calculated_MW: 14kDa/17kDa/65kDa/83kDa/106kDa
-------------------	--

Gene ID:	83416
----------	-------

UniProt:	Q96RD9
----------	------------------------

Application Details

Application Notes:	WB 1:500 - 1:2000
--------------------	-------------------

Restrictions:	For Research Use only
---------------	-----------------------

Handling

Concentration:	1 mg/mL
----------------	---------

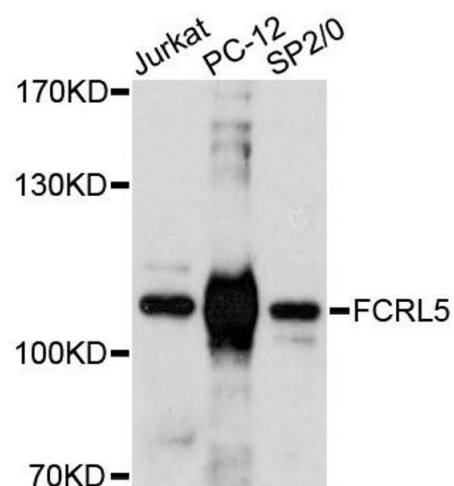
Buffer:	Buffer: PBS with 0.02 % sodium azide, 50 % glycerol, pH 7.3.
---------	--

Preservative:	Sodium azide
---------------	--------------

Precaution of Use:	This product contains Sodium azide: a POISONOUS AND HAZARDOUS SUBSTANCE which should be handled by trained staff only.
--------------------	--

Storage:	-20 °C
----------	--------

Storage Comment:	Store at -20°C. Avoid freeze / thaw cycles.
------------------	---



Western Blotting

Image 1. Western blot analysis of extracts of various cell lines, using FCRL5 antibody.