

Datasheet for ABIN656828  
**anti-CTBP2 antibody (N-Term)**[Go to Product page](#)

## 2 Images

## Overview

Quantity:	400 µL
Target:	CTBP2
Binding Specificity:	AA 1-30, N-Term
Reactivity:	Human
Host:	Rabbit
Clonality:	Polyclonal
Application:	Western Blotting (WB), Immunohistochemistry (Paraffin-embedded Sections) (IHC (p))

## Product Details

Immunogen:	This CTBP2 antibody is generated from rabbits immunized with a KLH conjugated synthetic peptide between 1-30 amino acids from the N-terminal region of human CTBP2.
Clone:	RB20526
Isotype:	Ig Fraction
Predicted Reactivity:	B, M, Rat, X
Purification:	This antibody is purified through a protein A column, followed by peptide affinity purification.

## Target Details

Target:	CTBP2
Alternative Name:	CTBP2 ( <a href="#">CTBP2 Products</a> )
Background:	This gene produces alternative transcripts encoding two distinct proteins. One protein is a

## Target Details

transcriptional repressor, while the other isoform is a major component of specialized synapses known as synaptic ribbons. Both proteins contain a NAD<sup>+</sup> binding domain similar to NAD<sup>+</sup>-dependent 2-hydroxyacid dehydrogenases. A portion of the 3' untranslated region was used to map this gene to chromosome 21q21.3, however, it was noted that similar loci elsewhere in the genome are likely. Blast analysis shows that this gene is present on chromosome 10. [provided by RefSeq].

Molecular Weight:	48945
Gene ID:	1488
NCBI Accession:	<a href="#">NP_001077383</a> , <a href="#">NP_001320</a> , <a href="#">NP_073713</a>
UniProt:	<a href="#">P56545</a>

## Application Details

Application Notes:	WB: 1:1000. IHC-P: 1:10~50
Restrictions:	For Research Use only

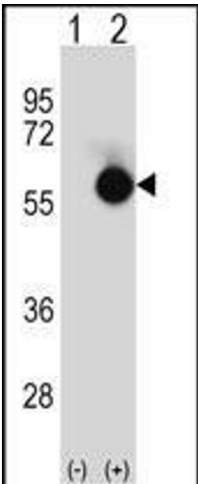
## Handling

Format:	Liquid
Buffer:	Purified polyclonal antibody supplied in PBS with 0.09 % (W/V) sodium azide.
Preservative:	Sodium azide
Precaution of Use:	This product contains Sodium azide: a POISONOUS AND HAZARDOUS SUBSTANCE which should be handled by trained staff only.
Storage:	4 °C, -20 °C
Storage Comment:	CTBP2 Antibody (N-term) can be refrigerated at 2-8 °C for up to 6 months. For long term storage, place the at -20 °C.
Expiry Date:	6 months



**Immunohistochemistry (Paraffin-embedded Sections)**

**Image 1.** CTBP2 Antibody (N-term) (ABIN656828 and ABIN2846037) immunohistochemistry analysis in formalin fixed and paraffin embedded human rectum tissue followed by peroxidase conjugation of the secondary antibody and DAB staining. This data demonstrates the use of CTBP2 Antibody (N-term) for immunohistochemistry. Clinical relevance has not been evaluated.



**Western Blotting**

**Image 2.** Western blot analysis of CTBP2 (arrow) using rabbit polyclonal CTBP2 Antibody (N-term) (ABIN656828 and ABIN2846037). 293 cell lysates (2 µg/lane) either nontransfected (Lane 1) or transiently transfected (Lane 2) with the CTBP2 gene.