



[Go to Product page](#)

Datasheet for ABIN656829  
**anti-GCDH antibody (C-Term)**

2 Images

Overview

Quantity:	400 µL
Target:	GCDH
Binding Specificity:	AA 336-365, C-Term
Reactivity:	Human
Host:	Rabbit
Clonality:	Polyclonal
Conjugate:	This GCDH antibody is un-conjugated
Application:	Western Blotting (WB), Immunohistochemistry (Paraffin-embedded Sections) (IHC (p))

Product Details

Immunogen:	This GCDH antibody is generated from rabbits immunized with a KLH conjugated synthetic peptide between 336-365 amino acids from the C-terminal region of human GCDH.
Clone:	RB20979
Isotype:	Ig Fraction
Predicted Reactivity:	B, Pr
Purification:	This antibody is purified through a protein A column, followed by peptide affinity purification.

Target Details

Target:	GCDH
Alternative Name:	GCDH ( <a href="#">GCDH Products</a> )

## Target Details

---

**Background:** The protein encoded by this gene belongs to the acyl-CoA dehydrogenase family. It catalyzes the oxidative decarboxylation of glutaryl-CoA to crotonyl-CoA and CO<sub>2</sub> in the degradative pathway of L-lysine, L-hydroxylysine, and L-tryptophan metabolism. It uses electron transfer flavoprotein as its electron acceptor. The enzyme exists in the mitochondrial matrix as a homotetramer of 45-kD subunits. Alternatively spliced transcript variants encoding different isoforms have been identified.

**Molecular Weight:** 48127

**Gene ID:** 2639

**NCBI Accession:** [NP\\_000150](#), [NP\\_039663](#)

**UniProt:** [Q92947](#)

## Application Details

---

**Application Notes:** WB: 1:1000. IHC-P: 1:10~50

**Restrictions:** For Research Use only

## Handling

---

**Format:** Liquid

**Buffer:** Purified polyclonal antibody supplied in PBS with 0.09 % (W/V) sodium azide.

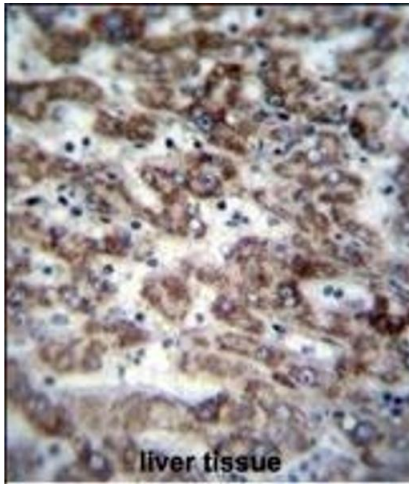
**Preservative:** Sodium azide

**Precaution of Use:** This product contains Sodium azide: a POISONOUS AND HAZARDOUS SUBSTANCE which should be handled by trained staff only.

**Storage:** 4 °C, -20 °C

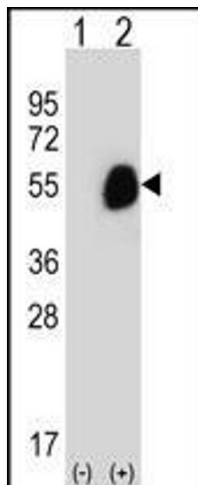
**Storage Comment:** GCDH Antibody (C-term) can be refrigerated at 2-8 °C for up to 6 months. For long term storage, place the at -20 °C.

**Expiry Date:** 6 months



### Immunohistochemistry (Paraffin-embedded Sections)

**Image 1.** GCDH Antibody (C-term) (ABIN656829 and ABIN2846038) immunohistochemistry analysis in formalin fixed and paraffin embedded human liver tissue followed by peroxidase conjugation of the secondary antibody and DAB staining. This data demonstrates the use of GCDH Antibody (C-term) for immunohistochemistry. Clinical relevance has not been evaluated.



### Western Blotting

**Image 2.** Western blot analysis of GCDH (arrow) using rabbit polyclonal GCDH Antibody (C-term) (ABIN656829 and ABIN2846038). 293 cell lysates (2 µg/lane) either nontransfected (Lane 1) or transiently transfected (Lane 2) with the GCDH gene.