



[Go to Product page](#)

Datasheet for ABIN6568291  
**anti-TMPRSS11A antibody**

1 Image

### Overview

Quantity:	200 µL
Target:	TMPRSS11A
Reactivity:	Human, Rat, Mouse
Host:	Rabbit
Clonality:	Polyclonal
Conjugate:	This TMPRSS11A antibody is un-conjugated
Application:	Western Blotting (WB)

### Product Details

Immunogen:	Recombinant protein of human TMPRSS11A
Isotype:	IgG
Purification:	Affinity purification

### Target Details

Target:	TMPRSS11A
Alternative Name:	TMPRSS11A ( <a href="#">TMPRSS11A Products</a> )
Background:	Synonyms: Airway trypsin-like protease 1, ECRG1, epidermal type II transmembrane serine protease, Epidermal type-II transmembrane serine protease, Esophageal cancer-susceptibility gene 1 protein, TM11A, Tmprss11a, TMPRSS11A protein, Transmembrane protease serine 11A
Molecular Weight:	Observed_MW: Refer to figures Calculated_MW: 47kDa

## Target Details

Gene ID: 339967

UniProt: [Q6ZMR5](#)

## Application Details

Application Notes: WB 1:500 - 1:2000

Restrictions: For Research Use only

## Handling

Concentration: 1 mg/mL

Buffer: Buffer: PBS with 0.02 % sodium azide, 50 % glycerol, pH 7.3.

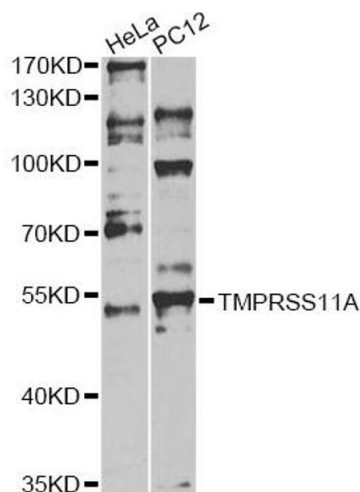
Preservative: Sodium azide

Precaution of Use: This product contains Sodium azide: a POISONOUS AND HAZARDOUS SUBSTANCE which should be handled by trained staff only.

Storage: -20 °C

Storage Comment: Store at -20°C. Avoid freeze / thaw cycles.

## Images



### Western Blotting

**Image 1.** Western blot analysis of extracts of various cell lines, using TMPRSS11A antibody.