

Datasheet for ABIN6568303

anti-SLC6A2 antibody[Go to Product page](#)**1** Image

Overview

Quantity:	200 µL
Target:	SLC6A2
Reactivity:	Human, Rat, Mouse
Host:	Rabbit
Clonality:	Polyclonal
Conjugate:	This SLC6A2 antibody is un-conjugated
Application:	Western Blotting (WB)

Product Details

Immunogen:	Recombinant protein of human SLC6A2
Isotype:	IgG
Purification:	Affinity purification

Target Details

Target:	SLC6A2
Alternative Name:	SLC6A2 (SLC6A2 Products)
Background:	Synonyms: NAT1,NET,NET1,Neurotransmitter transporter,Norepinephrine transporter,SC6A2,Slc6a2,SLC6A5,Sodium dependent noradrenaline transporter,Sodium-dependent noradrenaline transporter,Solute carrier family 6 (neurotransmitter transporter norepinephrine) member 5,Solute carrier family 6 (neurotransmitter transporter, noradrenalin), member 2,Solute carrier family 6 member 2,Solute carrier family 6 member 5

Target Details

Background: This gene encodes a member of the sodium:neurotransmitter symporter family. This member is a multi-pass membrane protein, which is responsible for reuptake of norepinephrine into presynaptic nerve terminals and is a regulator of norepinephrine homeostasis. Mutations in this gene cause orthostatic intolerance, a syndrome characterized by lightheadedness, fatigue, altered mentation and syncope. Alternatively spliced transcript variants encoding different isoforms have been identified in this gene.

Molecular Weight:	Observed_MW: 69kDa Calculated_MW: 57kDa/69kDa/70kDa
-------------------	--

Gene ID:	6530
----------	------

UniProt:	P23975
----------	------------------------

Application Details

Application Notes:	WB 1:500 - 1:2000
--------------------	-------------------

Restrictions:	For Research Use only
---------------	-----------------------

Handling

Concentration:	1 mg/mL
----------------	---------

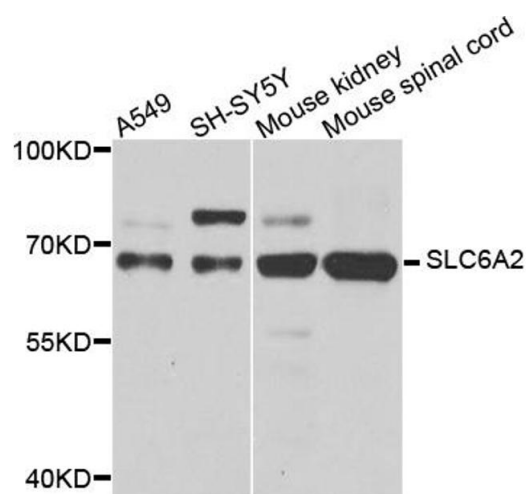
Buffer:	Buffer: PBS with 0.02 % sodium azide, 50 % glycerol, pH 7.3.
---------	--

Preservative:	Sodium azide
---------------	--------------

Precaution of Use:	This product contains Sodium azide: a POISONOUS AND HAZARDOUS SUBSTANCE which should be handled by trained staff only.
--------------------	--

Storage:	-20 °C
----------	--------

Storage Comment:	Store at -20°C. Avoid freeze / thaw cycles.
------------------	---



Western Blotting

Image 1. Western blot analysis of extracts of various cell lines, using SLC6A2 antibody.