

Datasheet for ABIN656831
anti-RAB3B antibody (C-Term)[Go to Product page](#)

1 Image

Overview

Quantity:	400 µL
Target:	RAB3B
Binding Specificity:	AA 170-196, C-Term
Reactivity:	Human
Host:	Rabbit
Clonality:	Polyclonal
Conjugate:	This RAB3B antibody is un-conjugated
Application:	Western Blotting (WB)

Product Details

Immunogen:	This RAB3B antibody is generated from rabbits immunized with a KLH conjugated synthetic peptide between 170-196 amino acids from the C-terminal region of human RAB3B.
Clone:	RB21044
Isotype:	Ig Fraction
Purification:	This antibody is purified through a protein A column, followed by peptide affinity purification.

Target Details

Target:	RAB3B
Alternative Name:	RAB3B (RAB3B Products)
Background:	Protein transport. It probably is involved in vesicular traffic (By similarity).

Target Details

Molecular Weight:	24758
Gene ID:	5865
NCBI Accession:	NP_002858
UniProt:	P20337

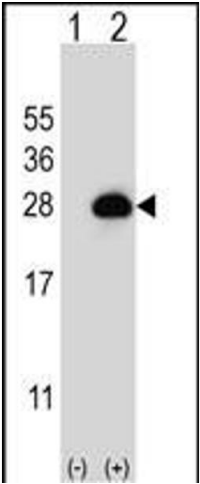
Application Details

Application Notes:	WB: 1:1000
Restrictions:	For Research Use only

Handling

Format:	Liquid
Buffer:	Purified polyclonal antibody supplied in PBS with 0.09 % (W/V) sodium azide.
Preservative:	Sodium azide
Precaution of Use:	This product contains Sodium azide: a POISONOUS AND HAZARDOUS SUBSTANCE which should be handled by trained staff only.
Storage:	4 °C, -20 °C
Storage Comment:	RAB3B Antibody (C-term) can be refrigerated at 2-8 °C for up to 6 months. For long term storage, place the at -20 °C.
Expiry Date:	6 months

Validation report #102069 for Western Blotting (WB)



Western Blotting

Image 1. Western blot analysis of RAB3B (arrow) using rabbit polyclonal RAB3B Antibody (C-term) (ABIN656831 and ABIN2846040). 293 cell lysates (2 µg/lane) either nontransfected (Lane 1) or transiently transfected (Lane 2) with the RAB3B gene.