

Datasheet for ABIN656832
anti-RNF11 antibody (AA 64-90)[Go to Product page](#)

3 Images

Overview

Quantity:	400 µL
Target:	RNF11
Binding Specificity:	AA 64-90
Reactivity:	Human
Host:	Rabbit
Clonality:	Polyclonal
Conjugate:	This RNF11 antibody is un-conjugated
Application:	Western Blotting (WB), Flow Cytometry (FACS), Immunohistochemistry (Paraffin-embedded Sections) (IHC (p))

Product Details

Immunogen:	This RNF11 antibody is generated from rabbits immunized with a KLH conjugated synthetic peptide between 64-90 amino acids from the Central region of human RNF11.
Clone:	RB21047
Isotype:	Ig Fraction
Predicted Reactivity:	B, M
Purification:	This antibody is purified through a protein A column, followed by peptide affinity purification.

Target Details

Target:	RNF11
---------	-------

Target Details

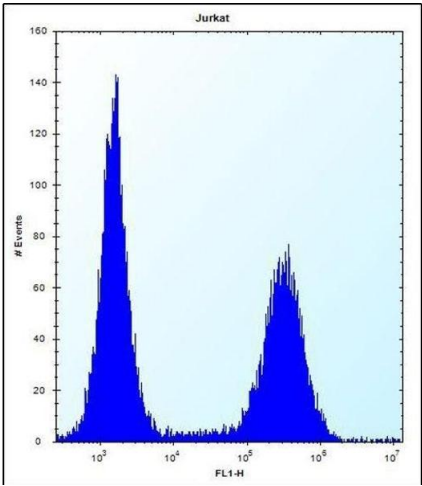
Alternative Name:	RNF11 (RNF11 Products)
Background:	The protein encoded by this gene contains a RING-H2 finger motif, which is known to be important for protein-protein interactions. The expression of this gene has been shown to be induced by mutant RET proteins (MEN2A/MEN2B). The germline mutations in RET gene are known to be responsible for the development of multiple endocrine neoplasia (MEN). [provided by RefSeq].
Molecular Weight:	17444
Gene ID:	26994
NCBI Accession:	NP_055187
UniProt:	Q9Y3C5

Application Details

Application Notes:	WB: 1:1000. IHC-P: 1:10~50. FC: 1:10~50
Restrictions:	For Research Use only

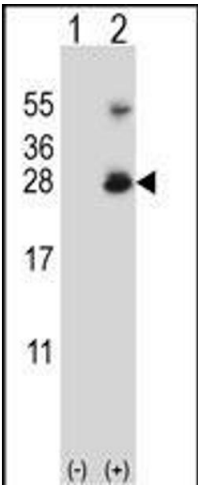
Handling

Format:	Liquid
Buffer:	Purified polyclonal antibody supplied in PBS with 0.09 % (W/V) sodium azide.
Preservative:	Sodium azide
Precaution of Use:	This product contains Sodium azide: a POISONOUS AND HAZARDOUS SUBSTANCE which should be handled by trained staff only.
Storage:	4 °C, -20 °C
Storage Comment:	RNF11 Antibody (Center) can be refrigerated at 2-8 °C for up to 6 months. For long term storage, place the at -20 °C.
Expiry Date:	6 months



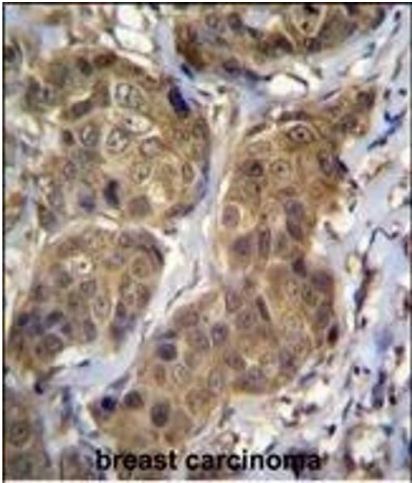
Flow Cytometry

Image 1. RNF11 Antibody (Center) (ABIN656832 and ABIN2846041) flow cytometric analysis of Jurkat cells (right histogram) compared to a negative control cell (left histogram). FITC-conjugated donkey-anti-rabbit secondary antibodies were used for the analysis.



Western Blotting

Image 2. Western blot analysis of RNF11 (arrow) using rabbit polyclonal RNF11 Antibody (Center) (ABIN656832 and ABIN2846041). 293 cell lysates (2 μ g/lane) either nontransfected (Lane 1) or transiently transfected (Lane 2) with the RNF11 gene.



Immunohistochemistry (Paraffin-embedded Sections)

Image 3. RNF11 Antibody (Center) (ABIN656832 and ABIN2846041) immunohistochemistry analysis in formalin fixed and paraffin embedded human breast carcinoma followed by peroxidase conjugation of the secondary antibody and DAB staining. This data demonstrates the use of RNF11 Antibody (Center) for immunohistochemistry. Clinical relevance has not been evaluated.