

Datasheet for ABIN656833
anti-COCH antibody (AA 399-428)[Go to Product page](#)

3 Images

Overview

Quantity:	400 µL
Target:	COCH
Binding Specificity:	AA 399-428
Reactivity:	Human
Host:	Rabbit
Clonality:	Polyclonal
Conjugate:	This COCH antibody is un-conjugated
Application:	Western Blotting (WB), Flow Cytometry (FACS), Immunohistochemistry (Paraffin-embedded Sections) (IHC (p))

Product Details

Immunogen:	This COCH antibody is generated from rabbits immunized with a KLH conjugated synthetic peptide between 399-428 amino acids from the Central region of human COCH.
Clone:	RB21184
Isotype:	Ig Fraction
Predicted Reactivity:	B
Purification:	This antibody is purified through a protein A column, followed by peptide affinity purification.

Target Details

Target:	COCH
---------	------

Target Details

Alternative Name:	COCH (COCH Products)
Background:	<p>The protein encoded by this gene is highly conserved in human, mouse, and chicken, showing 94 % and 79 % amino acid identity of human to mouse and chicken sequences, respectively.</p> <p>Hybridization to this gene was detected in spindle-shaped cells located along nerve fibers between the auditory ganglion and sensory epithelium. These cells accompany neurites at the habenula perforata, the opening through which neurites extend to innervate hair cells. This and the pattern of expression of this gene in chicken inner ear paralleled the histologic findings of acidophilic deposits, consistent with mucopolysaccharide ground substance, in temporal bones from DFNA9 (autosomal dominant nonsyndromic sensorineural deafness 9) patients.</p> <p>Mutations that cause DFNA9 have been reported in this gene. Alternative splicing results in multiple transcript variants encoding the same protein. Additional splice variants encoding distinct isoforms have been described but their biological validities have not been demonstrated. [provided by RefSeq].</p>
Molecular Weight:	59483
Gene ID:	1690
NCBI Accession:	NP_001128530 , NP_004077
UniProt:	O43405
Pathways:	Sensory Perception of Sound

Application Details

Application Notes:	WB: 1:1000. FC: 1:10~50. IHC-P: 1:10~50
Restrictions:	For Research Use only

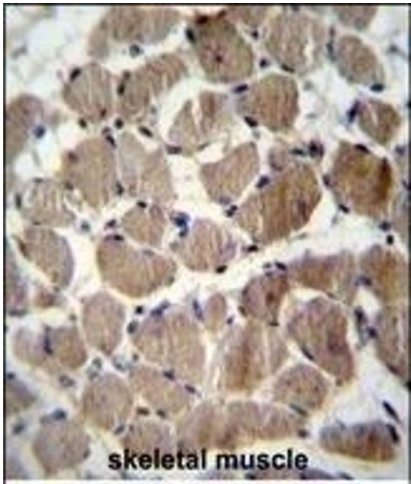
Handling

Format:	Liquid
Buffer:	Purified polyclonal antibody supplied in PBS with 0.09 % (W/V) sodium azide.
Preservative:	Sodium azide
Precaution of Use:	This product contains Sodium azide: a POISONOUS AND HAZARDOUS SUBSTANCE which should be handled by trained staff only.
Storage:	4 °C,-20 °C
Storage Comment:	COCH Antibody (Center) can be refrigerated at 2-8 °C for up to 6 months. For long term storage,

place the at -20 °C.

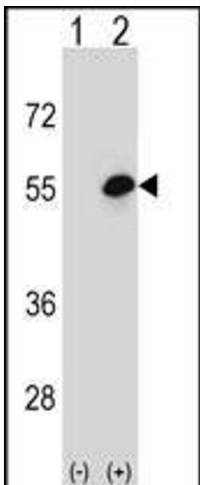
Expiry Date: 6 months

Images



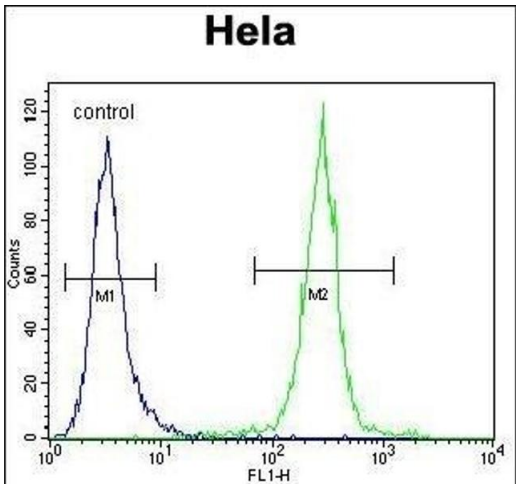
Immunohistochemistry (Paraffin-embedded Sections)

Image 1. COCH Antibody (Center) (ABIN656833 and ABIN2846042) immunohistochemistry analysis in formalin fixed and paraffin embedded human skeletal muscle followed by peroxidase conjugation of the secondary antibody and DAB staining. This data demonstrates the use of COCH Antibody (Center) for immunohistochemistry. Clinical relevance has not been evaluated.



Western Blotting

Image 2. Western blot analysis of COCH (arrow) using rabbit polyclonal COCH Antibody (Center) (ABIN656833 and ABIN2846042). 293 cell lysates (2 µg/lane) either nontransfected (Lane 1) or transiently transfected (Lane 2) with the COCH gene.



Flow Cytometry

Image 3. COCH Antibody (Center) (ABIN656833 and ABIN2846042) flow cytometric analysis of HeLa cells (right histogram) compared to a negative control cell (left histogram). FITC-conjugated goat-anti-rabbit secondary antibodies were used for the analysis.