

Datasheet for ABIN656840
anti-TUFM antibody (C-Term)[Go to Product page](#)

1 Image

Overview

Quantity:	400 µL
Target:	TUFM (Tufm)
Binding Specificity:	AA 342-370, C-Term
Reactivity:	Human
Host:	Rabbit
Clonality:	Polyclonal
Conjugate:	This TUFM antibody is un-conjugated
Application:	Western Blotting (WB)

Product Details

Immunogen:	This TUFM antibody is generated from rabbits immunized with a KLH conjugated synthetic peptide between 342-370 amino acids from the C-terminal region of human TUFM.
Clone:	RB22085
Isotype:	Ig Fraction
Predicted Reactivity:	M, Rat
Purification:	This antibody is purified through a protein A column, followed by peptide affinity purification.

Target Details

Target:	TUFM (Tufm)
Alternative Name:	TUFM (Tufm Products)

Target Details

Background:	This gene encodes a protein which participates in protein translation in mitochondria. Mutations in this gene have been associated with combined oxidative phosphorylation deficiency resulting in lactic acidosis and fatal encephalopathy. A pseudogene has been identified on chromosome 17.
-------------	---

Molecular Weight:	49542
-------------------	-------

Gene ID:	7284
----------	------

NCBI Accession:	NP_003312
-----------------	---------------------------

UniProt:	P49411
----------	------------------------

Application Details

Application Notes:	WB: 1:1000
--------------------	------------

Restrictions:	For Research Use only
---------------	-----------------------

Handling

Format:	Liquid
---------	--------

Buffer:	Purified polyclonal antibody supplied in PBS with 0.09 % (W/V) sodium azide.
---------	--

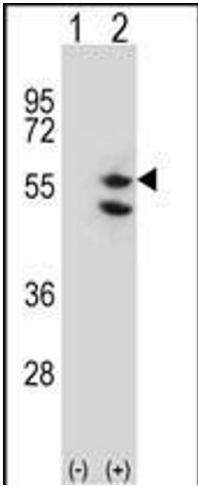
Preservative:	Sodium azide
---------------	--------------

Precaution of Use:	This product contains Sodium azide: a POISONOUS AND HAZARDOUS SUBSTANCE which should be handled by trained staff only.
--------------------	--

Storage:	4 °C, -20 °C
----------	--------------

Storage Comment:	TUFM Antibody (C-term) can be refrigerated at 2-8 °C for up to 6 months. For long term storage, place the at -20 °C.
------------------	--

Expiry Date:	6 months
--------------	----------



Western Blotting

Image 1. Western blot analysis of TUFM (arrow) using rabbit polyclonal TUFM Antibody (C-term) (ABIN656840 and ABIN2846048). 293 cell lysates (2 µg/lane) either nontransfected (Lane 1) or transiently transfected (Lane 2) with the TUFM gene.