

Datasheet for ABIN656850

anti-CLTB antibody**1** Image[Go to Product page](#)

Overview

Quantity:	400 µL
Target:	CLTB
Reactivity:	Human
Host:	Rabbit
Clonality:	Polyclonal
Conjugate:	This CLTB antibody is un-conjugated
Application:	Western Blotting (WB)

Product Details

Immunogen:	This CLTB antibody is generated from rabbits immunized with a recombinant protein from human CLTB.
Clone:	RB23151
Isotype:	Ig Fraction
Purification:	This antibody is purified through a protein A column, followed by peptide affinity purification.

Target Details

Target:	CLTB
Alternative Name:	CLTB (CLTB Products)
Background:	Clathrin is a large, soluble protein composed of heavy and light chains. It functions as the main structural component of the lattice-type cytoplasmic face of coated pits and vesicles which entrap specific macromolecules during receptor-mediated endocytosis. This gene encodes one

Target Details

of two clathrin light chain proteins which are believed to function as regulatory elements.
Alternative splicing results in multiple transcript variants.

Molecular Weight: 25190

Gene ID: 1212

NCBI Accession: [NP_001825](#), [NP_009028](#)

UniProt: [P09497](#)

Pathways: [Synaptic Membrane](#)

Application Details

Application Notes: WB: 1:1000

Restrictions: For Research Use only

Handling

Format: Liquid

Buffer: Purified polyclonal antibody supplied in PBS with 0.09 % (W/V) sodium azide.

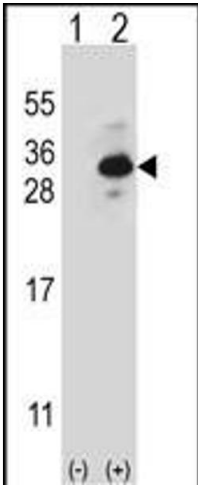
Preservative: Sodium azide

Precaution of Use: This product contains Sodium azide: a POISONOUS AND HAZARDOUS SUBSTANCE which should be handled by trained staff only.

Storage: 4 °C, -20 °C

Storage Comment: CLTB Antibody can be refrigerated at 2-8 °C for up to 6 months. For long term storage, place the at -20 °C.

Expiry Date: 6 months



Western Blotting

Image 1. Western blot analysis of CLTB (arrow) using rabbit polyclonal CLTB Antibody (ABIN656850 and ABIN2846055). 293 cell lysates (2 µg/lane) either nontransfected (Lane 1) or transiently transfected (Lane 2) with the CLTB gene.