



[Go to Product page](#)

Datasheet for ABIN656851

## anti-Glycerol Kinase antibody (N-Term)

### 2 Images

#### Overview

Quantity:	400 µL
Target:	Glycerol Kinase (GK)
Binding Specificity:	AA 24-51, N-Term
Reactivity:	Human
Host:	Rabbit
Clonality:	Polyclonal
Conjugate:	This Glycerol Kinase antibody is un-conjugated
Application:	Western Blotting (WB), Immunohistochemistry (Paraffin-embedded Sections) (IHC (p))

#### Product Details

Immunogen:	This GK antibody is generated from rabbits immunized with a KLH conjugated synthetic peptide between 24-51 AA from the N-terminal region of human GK.
Clone:	RB23979
Isotype:	Ig Fraction
Specificity:	This GK antibody is generated from rabbits immunized with a KLH conjugated synthetic peptide between 23-51 amino acids from the N-terminal region of human GK.
Predicted Reactivity:	Cow (Bovine), Mouse (Murine), Rat (Rattus)
Purification:	This antibody is purified through a protein A column, followed by peptide affinity purification.

## Target Details

---

Target:	Glycerol Kinase (GK)
Alternative Name:	GK ( <a href="#">GK Products</a> )
Background:	<p>The product of this gene belongs to the FGGY kinase family of proteins and encodes glycerol kinase. Glycerol kinase is a key enzyme in the regulation of glycerol uptake and metabolism. It catalyzes the phosphorylation of glycerol by ATP, yielding ADP and glycerol-3-phosphate. Defects in this gene are the cause of glycerol kinase deficiency (GKD). Alternatively spliced transcript variants encoding different isoforms have been identified.</p> <p>Synonyms: Glycerol kinase,GK,</p>
Molecular Weight:	61245 DA
Gene ID:	2710
NCBI Accession:	<a href="#">NP_000158</a> , <a href="#">NP_001121599</a> , <a href="#">NP_976325</a>
UniProt:	<a href="#">P32189</a>

## Application Details

---

Application Notes:	WB = 1:1000, IHC (p) = 1:10-50
Restrictions:	For Research Use only

## Handling

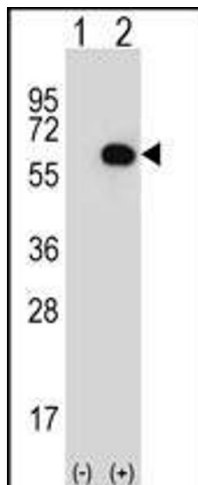
---

Format:	Liquid
Concentration:	0.36 mg/mL
Buffer:	PBS with 0.09 % (W/V) sodium azide
Preservative:	Sodium azide
Precaution of Use:	This product contains sodium azide: a POISONOUS AND HAZARDOUS SUBSTANCE which should be handled by trained staff only.
Storage:	4 °C/-20 °C
Storage Comment:	GK Antibody (N-term) can be refrigerated at 2-8 °C for up to 6 months. For long term storage, place the at -20 °C.
Expiry Date:	6 months



### Immunohistochemistry (Paraffin-embedded Sections)

**Image 1.** GK Antibody (N-term) (ABIN656851 and ABIN2846056) immunohistochemistry analysis in formalin fixed and paraffin embedded human testis tissue followed by peroxidase conjugation of the secondary antibody and DAB staining. This data demonstrates the use of GK Antibody (N-term) for immunohistochemistry. Clinical relevance has not been evaluated.



### Western Blotting

**Image 2.** Western blot analysis of GK (arrow) using rabbit polyclonal GK Antibody (N-term) (ABIN656851 and ABIN2846056). 293 cell lysates (2 µg/lane) either nontransfected (Lane 1) or transiently transfected (Lane 2) with the GK gene.