



[Go to Product page](#)

Datasheet for ABIN656857

## anti-SLC15A3 antibody (AA 168-197)

### 2 Images

#### Overview

Quantity:	400 µL
Target:	SLC15A3
Binding Specificity:	AA 168-197
Reactivity:	Human
Host:	Rabbit
Clonality:	Polyclonal
Conjugate:	This SLC15A3 antibody is un-conjugated
Application:	Western Blotting (WB), Immunohistochemistry (Paraffin-embedded Sections) (IHC (p))

#### Product Details

Immunogen:	This SLC15A3 antibody is generated from rabbits immunized with a KLH conjugated synthetic peptide between 168-197 amino acids from the Central region of human SLC15A3.
Clone:	RB28120
Isotype:	Ig Fraction
Predicted Reactivity:	M, Rat
Purification:	This antibody is purified through a protein A column, followed by peptide affinity purification.

#### Target Details

Target:	SLC15A3
Alternative Name:	SLC15A3 ( <a href="#">SLC15A3 Products</a> )

## Target Details

---

Background:	SLC15A3 is proton oligopeptide cotransporter. Transports free histidine and certain di- and tripeptides (By similarity).
Molecular Weight:	63560
Gene ID:	51296
NCBI Accession:	<a href="#">NP_057666</a>
UniProt:	<a href="#">Q8IY34</a>

## Application Details

---

Application Notes:	WB: 1:2000. IHC-P: 1:10~50
Restrictions:	For Research Use only

## Handling

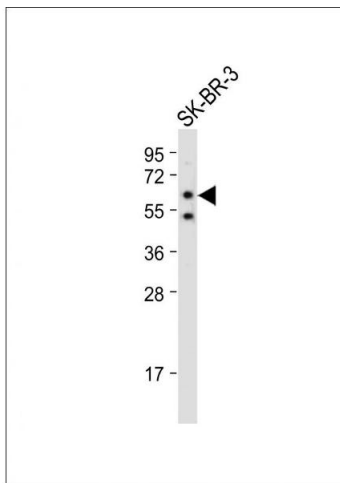
---

Format:	Liquid
Buffer:	Purified polyclonal antibody supplied in PBS with 0.09 % (W/V) sodium azide.
Preservative:	Sodium azide
Precaution of Use:	This product contains Sodium azide: a POISONOUS AND HAZARDOUS SUBSTANCE which should be handled by trained staff only.
Storage:	4 °C, -20 °C
Storage Comment:	SLC15A3 Antibody (Center) can be refrigerated at 2-8 °C for up to 6 months. For long term storage, place the at -20 °C.
Expiry Date:	6 months



### Immunohistochemistry (Paraffin-embedded Sections)

**Image 1.** SLC15A3 Antibody (Center) (ABIN656857 and ABIN2846062) immunohistochemistry analysis in formalin fixed and paraffin embedded human placenta tissue followed by peroxidase conjugation of the secondary antibody and DAB staining. This data demonstrates the use of SLC15A3 Antibody (Center) for immunohistochemistry. Clinical relevance has not been evaluated.



### Western Blotting

**Image 2.** Anti-SLC15A3 Antibody (Center) at 1:2000 dilution + SK-BR-3 whole cell lysate Lysates/proteins at 20 µg per lane. Secondary Goat Anti-Rabbit IgG, (H+L), Peroxidase conjugated at 1/10000 dilution. Predicted band size : 64 kDa Blocking/Dilution buffer: 5 % NFDm/TBST.