

Datasheet for ABIN6568586
anti-SLC22A7 antibody



[Go to Product page](#)

1 Image

Overview

Quantity:	200 µL
Target:	SLC22A7
Reactivity:	Human, Mouse, Rat
Host:	Rabbit
Clonality:	Polyclonal
Conjugate:	This SLC22A7 antibody is un-conjugated
Application:	Western Blotting (WB)

Product Details

Immunogen:	Recombinant protein of human SLC22A7
Isotype:	IgG
Purification:	Affinity purification

Target Details

Target:	SLC22A7
Alternative Name:	SLC22A7 (SLC22A7 Products)
Background:	<p>Synonyms: hOAT2,liver specific transporter,NLT,Novel liver transporter,OAT2 ,Organic anion transporter 2,Organic anion transporter member 7,Organic anion transporter member 7 Fragment,S22A7,SLC22A7,solute carrier family 22 (organic anion transporter) member 7,Solute carrier family 22,Solute carrier family 22 member 7</p> <p>Background: The protein encoded by this gene is involved in the sodium-independent transport</p>

Target Details

and excretion of organic anions, some of which are potentially toxic. The encoded protein is an integral membrane protein and appears to be localized to the basolateral membrane of the kidney. Alternatively spliced transcript variants encoding different isoforms have been described.

Molecular Weight: Observed_MW: 60kDa
Calculated_MW: 26kDa/59kDa/60kDa

Gene ID: 10864

UniProt: [Q9Y694](#)

Application Details

Application Notes: WB 1:500 - 1:2000

Restrictions: For Research Use only

Handling

Concentration: 1 mg/mL

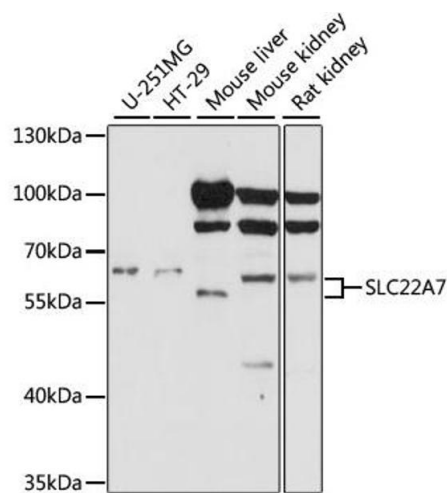
Buffer: Buffer: PBS with 0.02 % sodium azide, 50 % glycerol, pH 7.3.

Preservative: Sodium azide

Precaution of Use: This product contains Sodium azide: a POISONOUS AND HAZARDOUS SUBSTANCE which should be handled by trained staff only.

Storage: -20 °C

Storage Comment: Store at -20°C. Avoid freeze / thaw cycles.



Western Blotting

Image 1. Western blot analysis of extracts of various cell lines, using SLC22A7 antibody.