



[Go to Product page](#)

Datasheet for ABIN656861  
**anti-ELAVL2 antibody (AA 156-184)**

6 Images

Overview

Quantity:	400 µL
Target:	ELAVL2
Binding Specificity:	AA 156-184
Reactivity:	Human, Mouse
Host:	Rabbit
Clonality:	Polyclonal
Conjugate:	This ELAVL2 antibody is un-conjugated
Application:	Western Blotting (WB), Flow Cytometry (FACS), Immunohistochemistry (Paraffin-embedded Sections) (IHC (p))

Product Details

Immunogen:	This ELAVL2 antibody is generated from rabbits immunized with a KLH conjugated synthetic peptide between 156-184 amino acids from the Central region of human ELAVL2.
Clone:	RB28546
Isotype:	Ig Fraction
Predicted Reactivity:	Rat, X, Zf
Purification:	This antibody is purified through a protein A column, followed by peptide affinity purification.

Target Details

Target:	ELAVL2
---------	--------

## Target Details

---

Alternative Name:	ELAVL2 ( <a href="#">ELAVL2 Products</a> )
Background:	The protein encoded by this gene is a neural-specific RNA-binding protein that is known to bind to several 3' UTRs, including its own and also that of FOS and ID. The encoded protein may recognize a GAAA motif in the RNA. Three transcript variants encoding two different isoforms have been found for this gene.
Molecular Weight:	39504
Gene ID:	1993
NCBI Accession:	<a href="#">NP_001164666</a> , <a href="#">NP_001164668</a> , <a href="#">NP_004423</a>
UniProt:	<a href="#">Q12926</a>

## Application Details

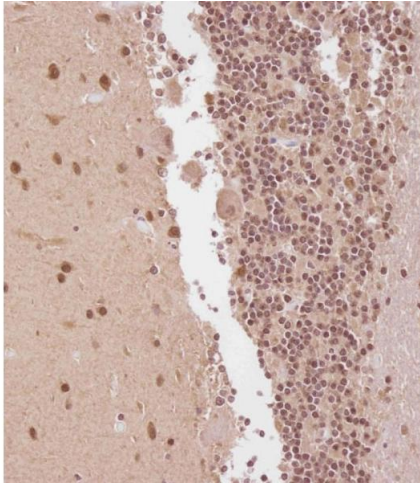
---

Application Notes:	WB: 1:1000. WB: 1:1000. WB: 1:2000. IHC-P: 1:100. IHC-P: 1:100. FC: 1:10~50
Restrictions:	For Research Use only

## Handling

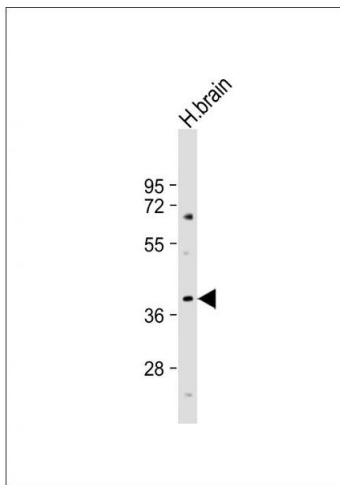
---

Format:	Liquid
Buffer:	Purified polyclonal antibody supplied in PBS with 0.09 % (W/V) sodium azide.
Preservative:	Sodium azide
Precaution of Use:	This product contains Sodium azide: a POISONOUS AND HAZARDOUS SUBSTANCE which should be handled by trained staff only.
Storage:	4 °C,-20 °C
Storage Comment:	ELAVL2 Antibody (Center) can be refrigerated at 2-8 °C for up to 6 months. For long term storage, place the at -20 °C.
Expiry Date:	6 months



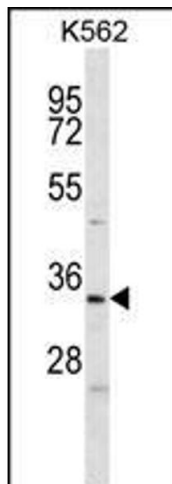
### Immunohistochemistry (Paraffin-embedded Sections)

**Image 1.** Immunohistochemical analysis of C on paraffin-embedded Human cerebellum tissue. Tissue was fixed with formaldehyde at room temperature. Heat induced epitope retrieval was performed by EDTA buffer (pH 9.0). Samples were incubated with primary Antibody (1:100) for 1 hour at room temperature. Undiluted CRF Anti-Polyvalent HRP Polymer antibody was used as the secondary antibody.



### Western Blotting

**Image 2.** Anti-ELAVL2 Antibody (Center) at 1:1000 dilution + human brain lysate Lysates/proteins at 20 µg per lane. Secondary Goat Anti-Rabbit IgG, (H+L), Peroxidase conjugated at 1/10000 dilution. Predicted band size : 40 kDa Blocking/Dilution buffer: 5 % NFDM/TBST.



### Western Blotting

**Image 3.** ELAVL2 Antibody (Center) (ABIN656861 and ABIN2846066) western blot analysis in K562 cell line lysates (35 µg/lane). This demonstrates the ELAVL2 antibody detected the ELAVL2 protein (arrow).

Please check the [product details page](#) for more images. Overall 6 images are available for ABIN656861.