

Datasheet for ABIN656864  
**anti-Plakophilin 2 antibody (C-Term)**

## 2 Images

[Go to Product page](#)

## Overview

|                      |  |
|----------------------|--|
| Quantity:            | 400 µL   |
| Target:              | Plakophilin 2 (PKP2)   |
| Binding Specificity: | AA 838-866, C-Term   |
| Reactivity:          | Human  |
| Host:                | Rabbit   |
| Clonality:           | Polyclonal   |
| Application:         | Western Blotting (WB), Immunohistochemistry (Paraffin-embedded Sections) (IHC (p)) |

## Product Details

|               |  |
|---------------|--|
| Immunogen:    | This PKP2 antibody is generated from rabbits immunized with a KLH conjugated synthetic peptide between 838-866 amino acids from the C-terminal region of human PKP2. |
| Clone:        | RB30230  |
| Isotype:      | Ig Fraction  |
| Purification: | This antibody is purified through a protein A column, followed by peptide affinity purification.   |

## Target Details

|                   |   |
|-------------------|---|
| Target:           | Plakophilin 2 (PKP2)  |
| Alternative Name: | PKP2 ( <a href="#">PKP2 Products</a> )  |
| Background:       | <p>This gene encodes a member of the arm-repeat (armadillo) and plakophilin gene families.</p> <p>Plakophilin proteins contain numerous armadillo repeats, localize to cell desmosomes and nuclei, and participate in linking cadherins to intermediate filaments in the cytoskeleton. This</p> |

## Target Details

gene product may regulate the signaling activity of beta-catenin. Two alternately spliced transcripts encoding two protein isoforms have been identified. A processed pseudogene with high similarity to this locus has been mapped to chromosome 12p13.

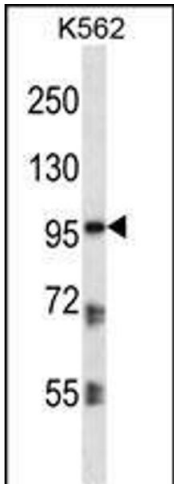
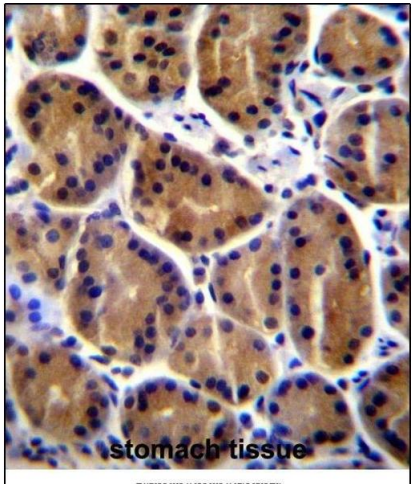
|                   |   |
|-------------------|---|
| Molecular Weight: | 97415   |
| Gene ID:          | 5318  |
| NCBI Accession:   | <a href="#">NP_001005242</a> , <a href="#">NP_004563</a>  |
| UniProt:          | <a href="#">Q99959</a>  |
| Pathways:         | <a href="#">Cell-Cell Junction Organization</a> , <a href="#">SARS-CoV-2 Protein Interactome</a> , <a href="#">The Global Phosphorylation Landscape of SARS-CoV-2 Infection</a> |

## Application Details

|                    |                            |
|--------------------|----------------------------|
| Application Notes: | WB: 1:1000. IHC-P: 1:10~50 |
| Restrictions:      | For Research Use only      |

## Handling

|                    |  |
|--------------------|--|
| Format:            | Liquid   |
| Buffer:            | Purified polyclonal antibody supplied in PBS with 0.09 % (W/V) sodium azide.   |
| Preservative:      | Sodium azide   |
| Precaution of Use: | This product contains Sodium azide: a POISONOUS AND HAZARDOUS SUBSTANCE which should be handled by trained staff only. |
| Storage:           | 4 °C,-20 °C  |
| Storage Comment:   | PKP2 Antibody (C-term) can be refrigerated at 2-8 °C for up to 6 months. For long term storage, place the at -20 °C.   |
| Expiry Date:       | 6 months   |



### Immunohistochemistry (Paraffin-embedded Sections)

**Image 1.** PKP2 Antibody (C-term) (ABIN656864 and ABIN2846068) immunohistochemistry analysis in formalin fixed and paraffin embedded human stomach tissue followed by peroxidase conjugation of the secondary antibody and DAB staining. This data demonstrates the use of PKP2 Antibody (C-term) for immunohistochemistry. Clinical relevance has not been evaluated.

### Western Blotting

**Image 2.** PKP2 Antibody (C-term) (ABIN656864 and ABIN2846068) western blot analysis in K562 cell line lysates (35 µg/lane). This demonstrates the PKP2 antibody detected the PKP2 protein (arrow).