



Datasheet for ABIN656874
anti-RASA1 antibody (C-Term)



[Go to Product page](#)

1 Image

Overview

Quantity:	400 µL
Target:	RASA1
Binding Specificity:	AA 966-993, C-Term
Reactivity:	Human
Host:	Rabbit
Clonality:	Polyclonal
Conjugate:	This RASA1 antibody is un-conjugated
Application:	Western Blotting (WB)

Product Details

Immunogen:	This RASA1 antibody is generated from rabbits immunized with a KLH conjugated synthetic peptide between 966-993 amino acids from the C-terminal region of human RASA1.
Clone:	RB31772
Isotype:	Ig Fraction
Predicted Reactivity:	Rat
Purification:	This antibody is purified through a protein A column, followed by peptide affinity purification.

Target Details

Target:	RASA1
Alternative Name:	RASA1 (RASA1 Products)

Target Details

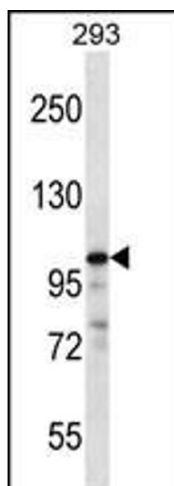
Background:	<p>The protein encoded by this gene is located in the cytoplasm and is part of the GAP1 family of GTPase-activating proteins. The gene product stimulates the GTPase activity of normal RAS p21 but not its oncogenic counterpart. Acting as a suppressor of RAS function, the protein enhances the weak intrinsic GTPase activity of RAS proteins resulting in the inactive GDP-bound form of RAS, thereby allowing control of cellular proliferation and differentiation. Mutations leading to changes in the binding sites of either protein are associated with basal cell carcinomas. Alternative splicing results in two isoforms where the shorter isoform, lacking the N-terminal hydrophobic region but retaining the same activity, appears to be abundantly expressed in placental but not adult tissues.</p>
Molecular Weight:	116403
Gene ID:	5921
NCBI Accession:	NP_002881 , NP_072179
UniProt:	P20936
Pathways:	Regulation of Actin Filament Polymerization , Signaling of Hepatocyte Growth Factor Receptor , VEGFR1 Specific Signals

Application Details

Application Notes:	WB: 1:1000
Restrictions:	For Research Use only

Handling

Format:	Liquid
Buffer:	Purified polyclonal antibody supplied in PBS with 0.09 % (W/V) sodium azide.
Preservative:	Sodium azide
Precaution of Use:	This product contains Sodium azide: a POISONOUS AND HAZARDOUS SUBSTANCE which should be handled by trained staff only.
Storage:	4 °C,-20 °C
Storage Comment:	RASA1 Antibody (C-term) can be refrigerated at 2-8 °C for up to 6 months. For long term storage, place the at -20 °C.
Expiry Date:	6 months



Western Blotting

Image 1. RASA1 Antibody (C-term) (ABIN656874 and ABIN2846075) western blot analysis in 293 cell line lysates (35 µg/lane). This demonstrates the RASA1 antibody detected the RASA1 protein (arrow).