

Datasheet for ABIN6568753
anti-SLC25A26 antibody



[Go to Product page](#)

1 Image

Overview

Quantity:	200 µL
Target:	SLC25A26
Reactivity:	Mouse
Host:	Rabbit
Clonality:	Polyclonal
Conjugate:	This SLC25A26 antibody is un-conjugated
Application:	Western Blotting (WB)

Product Details

Immunogen:	Recombinant protein of human SLC25A26
Isotype:	IgG
Purification:	Affinity purification

Target Details

Target:	SLC25A26
Alternative Name:	SLC25A26 (SLC25A26 Products)
Background:	<p>Synonyms: Mitochondrial S-adenosylmethionine transporter,S-adenosylmethionine mitochondrial carrier protein,SAMC,SAMC,slc25a26,solute carrier family 25 (mitochondrial carrier,phosphate carrier),member 26,Solute carrier family 25 member 26</p> <p>Background: This gene is a member of the mitochondrial carrier family which includes nuclear-encoded transporters localized on the inner mitochondrial membranes. Members of the family</p>

Target Details

transport important small molecules across the mitochondrial inner membrane. This protein is involved in the transport of S-adenosylmethionine (SAM) into the mitochondria. Mutations in this gene are associated with combined oxidative phosphorylation deficiency 28. Alternative splicing results in multiple transcript variants encoding different isoforms.

Molecular Weight: Observed_MW: 33kDa
Calculated_MW: 7kDa/20kDa/29kDa

Gene ID: 115286

UniProt: [Q70HW3](#)

Application Details

Application Notes: WB 1:200 - 1:2000

Restrictions: For Research Use only

Handling

Concentration: 1 mg/mL

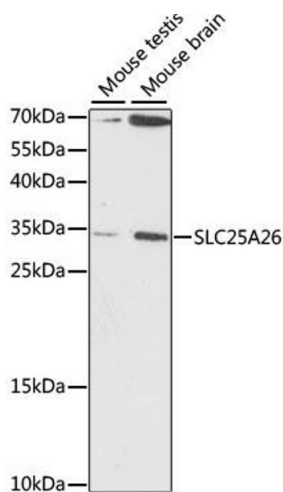
Buffer: Buffer: PBS with 0.02 % sodium azide, 50 % glycerol, pH 7.3.

Preservative: Sodium azide

Precaution of Use: This product contains Sodium azide: a POISONOUS AND HAZARDOUS SUBSTANCE which should be handled by trained staff only.

Storage: -20 °C

Storage Comment: Store at -20°C. Avoid freeze / thaw cycles.



Western Blotting

Image 1. Western blot analysis of extracts of various cell lines, using SLC25A26 antibody.