



[Go to Product page](#)

Datasheet for ABIN6568759

anti-LRWD1 antibody

1 Image

Overview

Quantity:	200 µL
Target:	LRWD1
Reactivity:	Mouse, Human, Rat
Host:	Rabbit
Clonality:	Polyclonal
Conjugate:	This LRWD1 antibody is un-conjugated
Application:	Western Blotting (WB)

Product Details

Immunogen:	A synthetic peptide of human Lrwd1
Isotype:	IgG
Purification:	Affinity purification

Target Details

Target:	LRWD1
Alternative Name:	Lrwd1 (LRWD1 Products)
Background:	Synonyms: 1200011O22Rik,AU042569,AW548074,DKFZp434K1815,Leucine rich repeats and WD repeat domain containing 1,Leucine-rich repeat and WD repeat-containing protein 1,LRWD1,LRWD1,ORC-associated protein,ORCA,Origin recognition complex-associated protein Background: The protein encoded by this gene interacts with components of the origin recognition complex (ORC) and regulates the formation of the prereplicative complex. The

Target Details

encoded protein stabilizes the ORC and therefore aids in DNA replication. This protein is required for the G1/S phase transition of the cell cycle. In addition, the encoded protein binds to trimethylated histone H3 in heterochromatin and recruits the ORC and lysine methyltransferases, which help maintain the repressive heterochromatic state. Two transcript variants encoding different isoforms have been found for this gene.

Molecular Weight: Observed_MW: 65kDa
Calculated_MW: 70kDa

Gene ID: 222229

UniProt: [Q9UFC0](#)

Pathways: [Chromatin Binding](#)

Application Details

Application Notes: WB 1:200 - 1:2000

Restrictions: For Research Use only

Handling

Concentration: 1 mg/mL

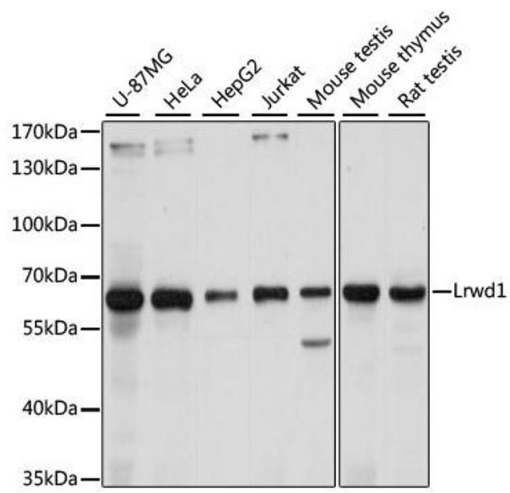
Buffer: Buffer: PBS with 0.02 % sodium azide, 50 % glycerol, pH 7.3.

Preservative: Sodium azide

Precaution of Use: This product contains Sodium azide: a POISONOUS AND HAZARDOUS SUBSTANCE which should be handled by trained staff only.

Storage: -20 °C

Storage Comment: Store at -20°C. Avoid freeze / thaw cycles.



Western Blotting

Image 1. Western blot analysis of extracts of various cell lines, using Lrwd1 antibody.