

Datasheet for ABIN656876
anti-PON2 antibody (N-Term)[Go to Product page](#)

3 Images

Overview

| | |
|----------------------|---|
| Quantity: | 400 µL |
| Target: | PON2 |
| Binding Specificity: | AA 79-107, N-Term |
| Reactivity: | Human |
| Host: | Rabbit |
| Clonality: | Polyclonal |
| Conjugate: | This PON2 antibody is un-conjugated |
| Application: | Western Blotting (WB), Flow Cytometry (FACS), Immunohistochemistry (Paraffin-embedded Sections) (IHC (p)) |

Product Details

| | |
|---------------|---|
| Immunogen: | This PON2 antibody is generated from rabbits immunized with a KLH conjugated synthetic peptide between 79-107 amino acids from the N-terminal region of human PON2. |
| Clone: | RB31960 |
| Isotype: | Ig Fraction |
| Purification: | This antibody is purified through a protein A column, followed by peptide affinity purification. |

Target Details

| | |
|-------------------|--|
| Target: | PON2 |
| Alternative Name: | PON2 (PON2 Products) |

Target Details

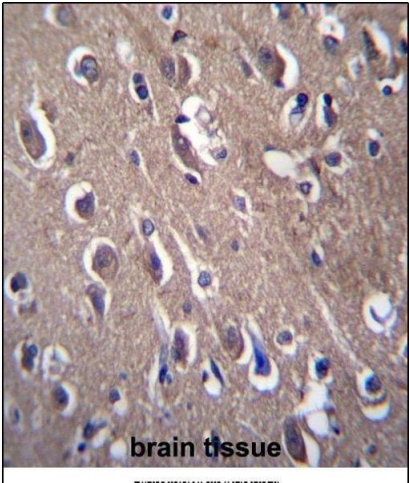
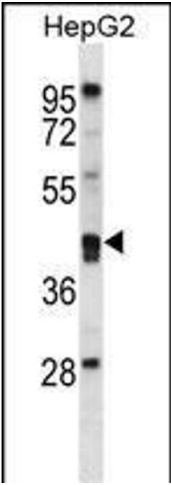
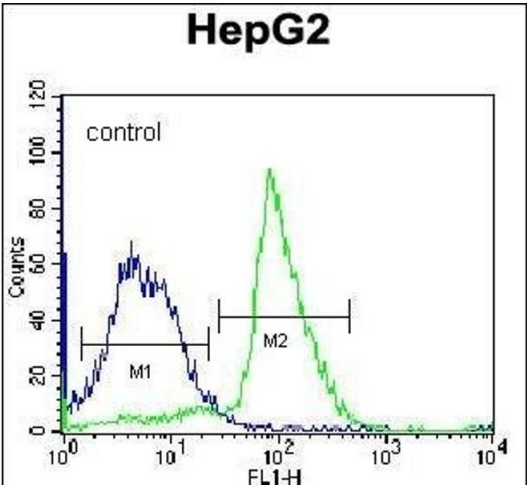
| | |
|-------------------|---|
| Background: | This gene encodes a member of the paraoxonase gene family, which includes three known members located adjacent to each other on the long arm of chromosome 7. The encoded protein is ubiquitously expressed in human tissues, membrane-bound, and may act as a cellular antioxidant, protecting cells from oxidative stress. Hydrolytic activity against acylhomoserine lactones, important bacterial quorum-sensing mediators, suggests the encoded protein may also play a role in defense responses to pathogenic bacteria. Mutations in this gene may be associated with vascular disease and a number of quantitative phenotypes related to diabetes. Alternatively spliced transcript variants encoding different isoforms have been described. |
| Molecular Weight: | 39381 |
| Gene ID: | 5445 |
| NCBI Accession: | NP_000296 |
| UniProt: | Q15165 |

Application Details

| | |
|--------------------|---|
| Application Notes: | WB: 1:1000. IHC-P: 1:10~50. FC: 1:10~50 |
| Restrictions: | For Research Use only |

Handling

| | |
|--------------------|--|
| Format: | Liquid |
| Buffer: | Purified polyclonal antibody supplied in PBS with 0.09 % (W/V) sodium azide. |
| Preservative: | Sodium azide |
| Precaution of Use: | This product contains Sodium azide: a POISONOUS AND HAZARDOUS SUBSTANCE which should be handled by trained staff only. |
| Storage: | 4 °C,-20 °C |
| Storage Comment: | PON2 Antibody (N-term) can be refrigerated at 2-8 °C for up to 6 months. For long term storage, place the at -20 °C. |
| Expiry Date: | 6 months |



Flow Cytometry

Image 1. PON2 Antibody (N-term) (ABIN656876 and ABIN2846077) flow cytometric analysis of K562 cells (right histogram) compared to a negative control cell (left histogram).FITC-conjugated donkey-anti-rabbit secondary antibodies were used for the analysis.

Western Blotting

Image 2. PON2 Antibody (N-term) (ABIN656876 and ABIN2846077) western blot analysis in HepG2 cell line lysates (35 µg/lane).This demonstrates the PON2 antibody detected the PON2 protein (arrow).

Immunohistochemistry (Paraffin-embedded Sections)

Image 3. PON2 Antibody (N-term) (ABIN656876 and ABIN2846077) immunohistochemistry analysis in formalin fixed and paraffin embedded human brain tissue followed by peroxidase conjugation of the secondary antibody and DAB staining.This data demonstrates the use of PON2 Antibody (N-term) for immunohistochemistry. Clinical relevance has not been evaluated.