

Datasheet for ABIN656884
anti-SIM1 antibody (N-Term)[Go to Product page](#)

4 Images

Overview

Quantity:	400 µL
Target:	SIM1
Binding Specificity:	AA 1-30, N-Term
Reactivity:	Human
Host:	Rabbit
Clonality:	Polyclonal
Conjugate:	This SIM1 antibody is un-conjugated
Application:	Western Blotting (WB), Immunohistochemistry (Paraffin-embedded Sections) (IHC (p))

Product Details

Immunogen:	This SIM1 antibody is generated from rabbits immunized with a KLH conjugated synthetic peptide between 1-30 amino acids from the N-terminal region of human SIM1.
Clone:	RB32160
Isotype:	Ig Fraction
Predicted Reactivity:	Zf, M, D
Purification:	This antibody is purified through a protein A column, followed by peptide affinity purification.

Target Details

Target:	SIM1
Alternative Name:	SIM1 (SIM1 Products)

Target Details

Background: SIM1 and SIM2 genes are Drosophila single-minded (sim) gene homologs. SIM1 transcript was detected only in fetal kidney out of various adult and fetal tissues tested. Since the sim gene plays an important role in Drosophila development and has peak levels of expression during the period of neurogenesis, it was proposed that the human SIM gene is a candidate for involvement in certain dysmorphic features (particularly the facial and skull characteristics), abnormalities of brain development, and/or mental retardation of Down syndrome.

Gene ID: 6492

NCBI Accession: [NP_005059](#)

UniProt: [P81133](#)

Application Details

Application Notes: WB: 1:1000. WB: 1:2000. IHC-P-Leica: 1:250. IHC-P-Leica: 1:250

Restrictions: For Research Use only

Handling

Format: Liquid

Buffer: Purified polyclonal antibody supplied in PBS with 0.09 % (W/V) sodium azide.

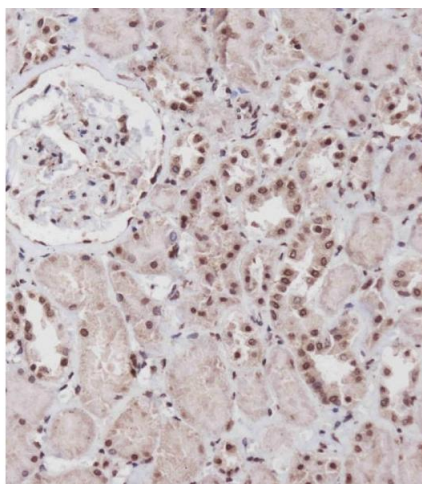
Preservative: Sodium azide

Precaution of Use: This product contains Sodium azide: a POISONOUS AND HAZARDOUS SUBSTANCE which should be handled by trained staff only.

Storage: 4 °C, -20 °C

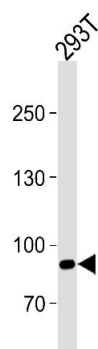
Storage Comment: SIM1 Antibody (N-term) can be refrigerated at 2-8 °C for up to 6 months. For long term storage, place the at -20 °C.

Expiry Date: 6 months



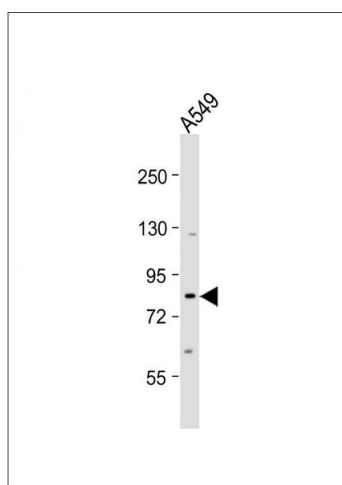
Immunohistochemistry (Paraffin-embedded Sections)

Image 1. Immunohistochemical analysis of (ABIN656884 and ABIN2846084) on paraffin-embedded Human kidney tissue was performed on the Leica®BOND RXm. Tissue was fixed with formaldehyde at room temperature. Heat induced epitope retrieval was performed by EDTA buffer (pH 9.0). Samples were incubated with primary Antibody (1:250) for 15 min at room temperature. Leica Bond Polymer Refine Detection was used as the secondary antibody.



Western Blotting

Image 2. Western blot analysis of lysate from 293T cell line, using SIM1 Antibody (N-term) (ABIN656884 and ABIN2846084). (ABIN656884 and ABIN2846084) was diluted at 1:1000 at each lane. A goat anti-rabbit IgG H&L(HRP) at 1:5000 dilution was used as the secondary antibody. Lysate at 35 µg.



Western Blotting

Image 3. Anti-SIM1 Antibody (N-term) at 1:2000 dilution + A549 whole cell lysate Lysates/proteins at 20 µg per lane. Secondary Goat Anti-Rabbit IgG, (H+L), Peroxidase conjugated at 1/10000 dilution. Predicted band size : 86 kDa Blocking/Dilution buffer: 5 % NFDm/TBST.

Please check the [product details page](#) for more images. Overall 4 images are available for ABIN656884.