

Datasheet for ABIN656888
anti-CES4A antibody (C-Term)



[Go to Product page](#)

2 Images

Overview

Quantity:	400 µL
Target:	CES4A
Binding Specificity:	AA 533-561, C-Term
Reactivity:	Human
Host:	Rabbit
Clonality:	Polyclonal
Conjugate:	This CES4A antibody is un-conjugated
Application:	Western Blotting (WB), Immunohistochemistry (Paraffin-embedded Sections) (IHC (p))

Product Details

Immunogen:	This CES8 antibody is generated from rabbits immunized with a KLH conjugated synthetic peptide between 533-561 amino acids from the C-terminal region of human CES8.
Clone:	RB32387
Isotype:	Ig Fraction
Purification:	This antibody is purified through a protein A column, followed by peptide affinity purification.

Target Details

Target:	CES4A
Alternative Name:	CES8 (CES4A Products)
Background:	CES8 is probable carboxylesterase (By similarity).

Target Details

Molecular Weight:	63529
Gene ID:	283848
NCBI Accession:	NP_001177130 , NP_001177131 , NP_776176
UniProt:	Q5XG92

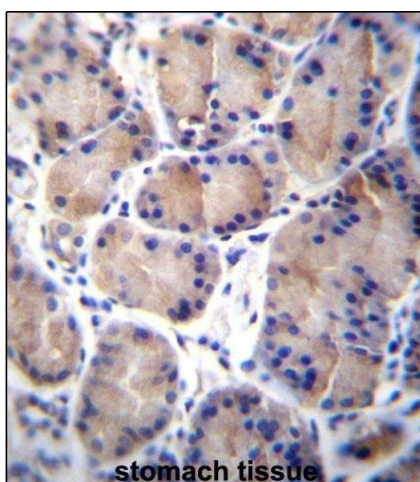
Application Details

Application Notes:	WB: 1:1000. IHC-P: 1:10~50
Restrictions:	For Research Use only

Handling

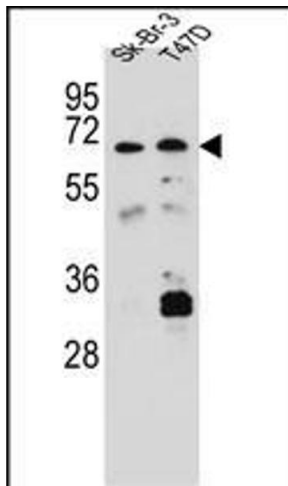
Format:	Liquid
Buffer:	Purified polyclonal antibody supplied in PBS with 0.09 % (W/V) sodium azide.
Preservative:	Sodium azide
Precaution of Use:	This product contains Sodium azide: a POISONOUS AND HAZARDOUS SUBSTANCE which should be handled by trained staff only.
Storage:	4 °C, -20 °C
Storage Comment:	CES8 Antibody (C-term) can be refrigerated at 2-8 °C for up to 6 months. For long term storage, place the at -20 °C.
Expiry Date:	6 months

Images



Immunohistochemistry (Paraffin-embedded Sections)

Image 1. CES8 Antibody (C-term) (ABIN656888 and ABIN2846087) immunohistochemistry analysis in formalin fixed and paraffin embedded human stomach tissue followed by peroxidase conjugation of the secondary antibody and DAB staining. This data demonstrates the use of CES8 Antibody (C-term) for immunohistochemistry. Clinical relevance has not been evaluated.



Western Blotting

Image 2. CES8 Antibody (C-term) (ABIN656888 and ABIN2846087) western blot analysis in Sk-Br-3,T47D cell line lysates (35 µg/lane).This demonstrates the CES8 antibody detected the CES8 protein (arrow).