



[Go to Product page](#)

Datasheet for ABIN656891

anti-RPS12 antibody (N-Term)

2 Images

Overview

Quantity:	400 µL
Target:	RPS12
Binding Specificity:	AA 15-44, N-Term
Reactivity:	Human, Mouse
Host:	Rabbit
Clonality:	Polyclonal
Conjugate:	This RPS12 antibody is un-conjugated
Application:	Western Blotting (WB)

Product Details

Immunogen:	This RPS12 antibody is generated from rabbits immunized with a KLH conjugated synthetic peptide between 15-44 amino acids from the N-terminal region of human RPS12.
Clone:	RB32421
Isotype:	Ig Fraction
Predicted Reactivity:	B, C, Pig, Rat, X
Purification:	This antibody is purified through a protein A column, followed by peptide affinity purification.

Target Details

Target:	RPS12
Alternative Name:	RPS12 (RPS12 Products)

Target Details

Background: Ribosomes, the organelles that catalyze protein synthesis, consist of a small 40S subunit and a large 60S subunit. Together these subunits are composed of 4 RNA species and approximately 80 structurally distinct proteins. This gene encodes a ribosomal protein that is a component of the 40S subunit. The protein belongs to the S12E family of ribosomal proteins. It is located in the cytoplasm. Increased expression of this gene in colorectal cancers compared to matched normal colonic mucosa has been observed. As is typical for genes encoding ribosomal proteins, there are multiple processed pseudogenes of this gene dispersed through the genome.

Molecular Weight: 14515

Gene ID: 6206

NCBI Accession: [NP_001007](#)

UniProt: [P25398](#)

Application Details

Application Notes: WB: 1:1000. WB: 1:1000

Restrictions: For Research Use only

Handling

Format: Liquid

Buffer: Purified polyclonal antibody supplied in PBS with 0.09 % (W/V) sodium azide.

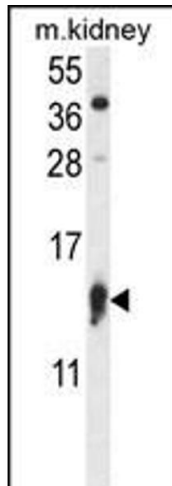
Preservative: Sodium azide

Precaution of Use: This product contains Sodium azide: a POISONOUS AND HAZARDOUS SUBSTANCE which should be handled by trained staff only.

Storage: 4 °C,-20 °C

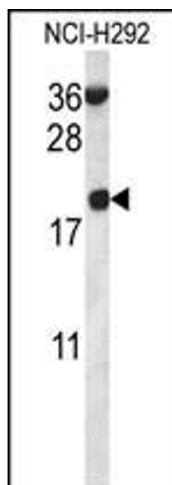
Storage Comment: RPS12 Antibody (N-term) can be refrigerated at 2-8 °C for up to 6 months. For long term storage, place the at -20 °C.

Expiry Date: 6 months



Western Blotting

Image 1. RPS12 Antibody (N-term) (ABIN656891 and ABIN2846090) western blot analysis in mouse kidney tissue lysates (35 µg/lane). This demonstrates the RPS12 antibody detected the RPS12 protein (arrow).



Western Blotting

Image 2. RPS12 Antibody (N-term) (ABIN656891 and ABIN2846090) western blot analysis in NCI- cell line lysates (35 µg/lane). This demonstrates the RPS12 antibody detected the RPS12 protein (arrow).