



[Go to Product page](#)

Datasheet for ABIN656892

## anti-SRSF11 antibody (C-Term)

### 1 Image

#### Overview

Quantity:	400 µL
Target:	SRSF11
Binding Specificity:	AA 366-395, C-Term
Reactivity:	Human
Host:	Rabbit
Clonality:	Polyclonal
Application:	Western Blotting (WB)

#### Product Details

Immunogen:	This SFRS11 antibody is generated from rabbits immunized with a KLH conjugated synthetic peptide between 366-395 amino acids from the C-terminal region of human SFRS11.
Clone:	RB32423
Isotype:	Ig Fraction
Purification:	This antibody is purified through a protein A column, followed by peptide affinity purification.

#### Target Details

Target:	SRSF11
Alternative Name:	SFRS11 ( <a href="#">SRSF11 Products</a> )
Background:	This gene encodes 54-kD nuclear protein that contains an arginine/serine-rich region similar to segments found in pre-mRNA splicing factors. Although the function of this protein is not yet known, structure and immunolocalization data suggest that it may play a role in pre-mRNA

## Target Details

---

processing. Alternative splicing results in multiple transcript variants encoding different proteins. In addition, a pseudogene of this gene has been found on chromosome 12.

Molecular Weight: 53542

Gene ID: 9295

NCBI Accession: [NP\\_001177916](#), [NP\\_004759](#)

UniProt: [Q05519](#)

## Application Details

---

Application Notes: WB: 1:1000

Restrictions: For Research Use only

## Handling

---

Format: Liquid

Buffer: Purified polyclonal antibody supplied in PBS with 0.09 % (W/V) sodium azide.

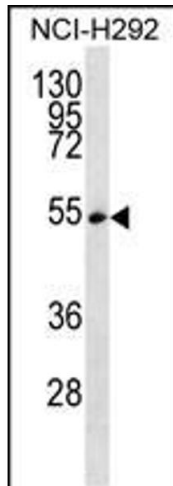
Preservative: Sodium azide

Precaution of Use: This product contains Sodium azide: a POISONOUS AND HAZARDOUS SUBSTANCE which should be handled by trained staff only.

Storage: 4 °C, -20 °C

Storage Comment: SFRS11 Antibody (C-term) can be refrigerated at 2-8 °C for up to 6 months. For long term storage, place the at -20 °C.

Expiry Date: 6 months



#### Western Blotting

**Image 1.** SFRS11 Antibody (C-term) (ABIN656892 and ABIN2846091) western blot analysis in NCI- cell line lysates (35 µg/lane). This demonstrates the SFRS11 antibody detected the SFRS11 protein (arrow).