



[Go to Product page](#)

Datasheet for ABIN656895
anti-EAPP antibody (C-Term)

2 Images

Overview

Quantity:	400 µL
Target:	EAPP
Binding Specificity:	AA 204-233, C-Term
Reactivity:	Human
Host:	Rabbit
Clonality:	Polyclonal
Conjugate:	This EAPP antibody is un-conjugated
Application:	Western Blotting (WB), Immunohistochemistry (Paraffin-embedded Sections) (IHC (p))

Product Details

Immunogen:	This EAPP antibody is generated from rabbits immunized with a KLH conjugated synthetic peptide between 204-233 amino acids from the C-terminal region of human EAPP.
Clone:	RB32438
Isotype:	Ig Fraction
Purification:	This antibody is purified through a protein A column, followed by peptide affinity purification.

Target Details

Target:	EAPP
Alternative Name:	EAPP (EAPP Products)
Background:	This gene encodes a phosphoprotein that interacts with several members of the E2F family of

Target Details

proteins. The protein localizes to the nucleus, and is present throughout the cell cycle except during mitosis. It functions to modulate E2F-regulated transcription and stimulate proliferation.

Molecular Weight: 32762

Gene ID: 55837

NCBI Accession: [NP_060923](#)

UniProt: [Q56P03](#)

Application Details

Application Notes: WB: 1:1000. IHC-P: 1:10~50

Restrictions: For Research Use only

Handling

Format: Liquid

Buffer: Purified polyclonal antibody supplied in PBS with 0.09 % (W/V) sodium azide.

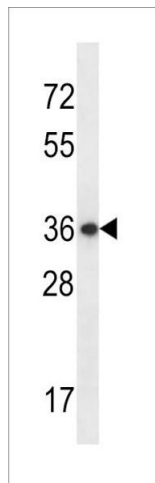
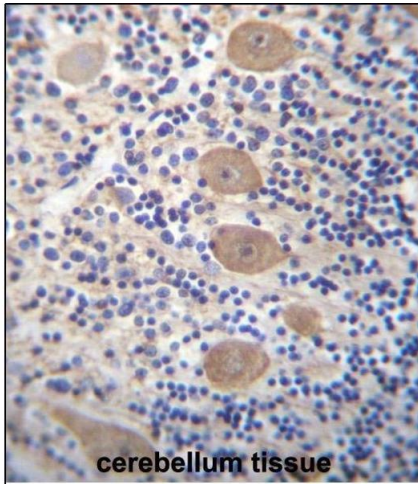
Preservative: Sodium azide

Precaution of Use: This product contains Sodium azide: a POISONOUS AND HAZARDOUS SUBSTANCE which should be handled by trained staff only.

Storage: 4 °C,-20 °C

Storage Comment: EAPP Antibody (C-term) can be refrigerated at 2-8 °C for up to 6 months. For long term storage, place the at -20 °C.

Expiry Date: 6 months



Immunohistochemistry (Paraffin-embedded Sections)

Image 1. EP Antibody (C-term) 12971b immunohistochemistry analysis in formalin fixed and paraffin embedded human cerebellum tissue followed by peroxidase conjugation of the secondary antibody and DAB staining. This data demonstrates the use of EP Antibody (C-term) for immunohistochemistry. Clinical relevance has not been evaluated.

Western Blotting

Image 2. EP Antibody (C-term) 12971b western blot analysis in WiDr cell line lysates (35 µg/lane). This demonstrates the EP antibody detected the EP protein (arrow).