

Datasheet for ABIN656899

**anti-Intrinsic Factor antibody (AA 189-218)**

## 4 Images

[Go to Product page](#)

## Overview

Quantity:	400 µL
Target:	Intrinsic Factor (GIF)
Binding Specificity:	AA 189-218
Reactivity:	Human
Host:	Rabbit
Clonality:	Polyclonal
Conjugate:	This Intrinsic Factor antibody is un-conjugated
Application:	Western Blotting (WB), Immunofluorescence (IF), Flow Cytometry (FACS), Immunohistochemistry (Paraffin-embedded Sections) (IHC (p))

## Product Details

Immunogen:	This GIF antibody is generated from rabbits immunized with a KLH conjugated synthetic peptide between 189-218 amino acids from the Central region of human GIF.
Clone:	RB32460
Isotype:	Ig Fraction
Purification:	This antibody is purified through a protein A column, followed by peptide affinity purification.

## Target Details

Target:	Intrinsic Factor (GIF)
Alternative Name:	GIF ( <a href="#">GIF Products</a> )

## Target Details

**Background:** This gene is a member of the cobalamin transport protein family. It encodes a glycoprotein secreted by parietal cells of the gastric mucosa and is required for adequate absorption of vitamin B12. Vitamin B12 is necessary for erythrocyte maturation and mutations in this gene may lead to congenital pernicious anemia.

**Molecular Weight:** 45416

**Gene ID:** 2694

**NCBI Accession:** [NP\\_005133](#)

**UniProt:** [P27352](#)

## Application Details

**Application Notes:** IF: 1:10~50. WB: 1:1000. IHC-P: 1:10~50. FC: 1:10~50

**Restrictions:** For Research Use only

## Handling

**Format:** Liquid

**Buffer:** Purified polyclonal antibody supplied in PBS with 0.09 % (W/V) sodium azide.

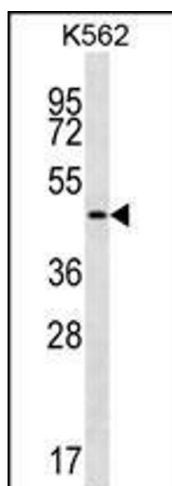
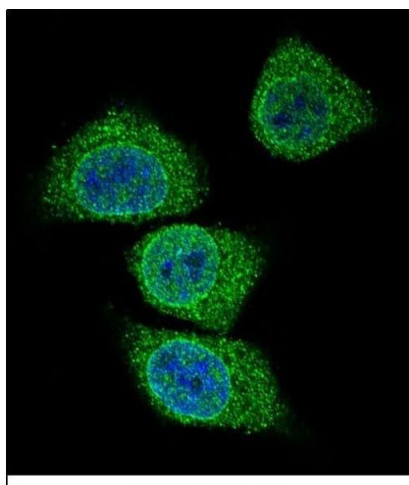
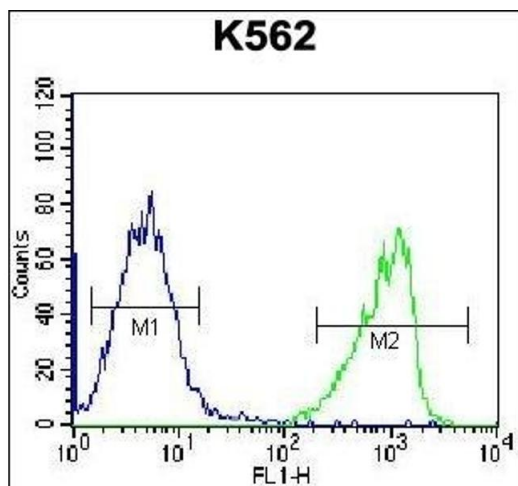
**Preservative:** Sodium azide

**Precaution of Use:** This product contains Sodium azide: a POISONOUS AND HAZARDOUS SUBSTANCE which should be handled by trained staff only.

**Storage:** 4 °C,-20 °C

**Storage Comment:** GIF Antibody (Center) can be refrigerated at 2-8 °C for up to 6 months. For long term storage, place the at -20 °C.

**Expiry Date:** 6 months



### Flow Cytometry

**Image 1.** GIF Antibody (Center) (ABIN656899 and ABIN2846098) flow cytometric analysis of K562 cells (right histogram) compared to a negative control cell (left histogram). FITC-conjugated goat-anti-rabbit secondary antibodies were used for the analysis.

### Immunofluorescence

**Image 2.** Confocal immunofluorescent analysis of GIF Antibody (Center) (ABIN656899 and ABIN2846098) with 293 cell followed by Alexa Fluor 488-conjugated goat anti-rabbit IgG (green). DAPI was used to stain the cell nuclear (blue).

### Western Blotting

**Image 3.** GIF Antibody (Center) (ABIN656899 and ABIN2846098) western blot analysis in K562 cell line lysates (35  $\mu$ g/lane). This demonstrates the GIF antibody detected the GIF protein (arrow).

Please check the [product details page](#) for more images. Overall 4 images are available for ABIN656899.