

Datasheet for ABIN656900

anti-Slc6a14 antibody (C-Term)

4 Images

[Go to Product page](#)

Overview

Quantity:	400 µL
Target:	Slc6a14
Binding Specificity:	AA 602-631, C-Term
Reactivity:	Human
Host:	Rabbit
Clonality:	Polyclonal
Conjugate:	This Slc6a14 antibody is un-conjugated
Application:	Western Blotting (WB), Immunohistochemistry (Paraffin-embedded Sections) (IHC (p))

Product Details

Immunogen:	This SLC6A14 antibody is generated from rabbits immunized with a KLH conjugated synthetic peptide between 602-631 amino acids from the C-terminal region of human SLC6A14.
Clone:	RB32462
Isotype:	Ig Fraction
Purification:	This antibody is purified through a protein A column, followed by peptide affinity purification.

Target Details

Target:	Slc6a14
Alternative Name:	SLC6A14 (Slc6a14 Products)
Background:	This gene encodes a member of the solute carrier family 6. Members of this family are sodium

Target Details

and chloride dependent neurotransmitter transporters. The encoded protein transports both neutral and cationic amino acids. This protein may also function as a beta-alanine carrier. Mutations in this gene may be associated with X-linked obesity. A pseudogene of this gene is found on chromosome X.

Molecular Weight: 72153

Gene ID: 11254

NCBI Accession: [NP_009162](#)

UniProt: [Q9UN76](#)

Application Details

Application Notes: WB: 1:1000. WB: 1:1000. WB: 1:1000. IHC-P-Leica: 1:500

Restrictions: For Research Use only

Handling

Format: Liquid

Buffer: Purified polyclonal antibody supplied in PBS with 0.09 % (W/V) sodium azide.

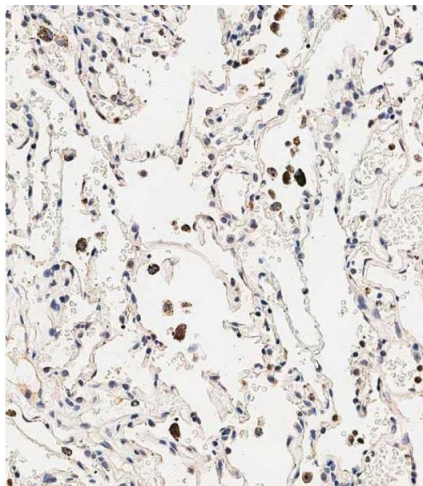
Preservative: Sodium azide

Precaution of Use: This product contains Sodium azide: a POISONOUS AND HAZARDOUS SUBSTANCE which should be handled by trained staff only.

Storage: 4 °C, -20 °C

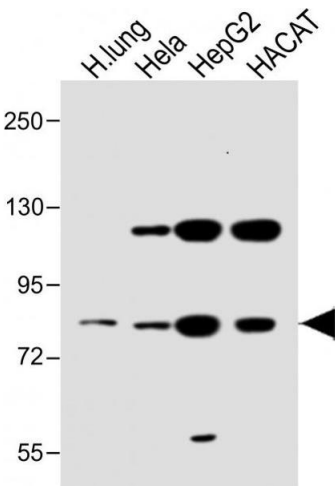
Storage Comment: SLC6A14 Antibody (C-term) can be refrigerated at 2-8 °C for up to 6 months. For long term storage, place the at -20 °C.

Expiry Date: 6 months



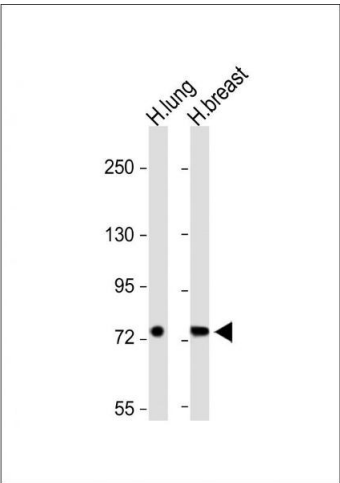
Immunohistochemistry (Paraffin-embedded Sections)

Image 1. Immunohistochemical analysis of paraffin-embedded human lung tissue using B performed on the Leica® BOND RXm. Tissue was fixed with formaldehyde at room temperature, antigen retrieval was by heat mediation with a EDTA buffer (pH 9. 0). Samples were incubated with primary Antibody (1:500) for 1 hours at room temperature. A undiluted biotinylated CRF Anti-Polyvalent HRP Polymer antibody was used as the secondary antibody.



Western Blotting

Image 2. All lanes : Anti-SLC6A14 Antibody (C-term) at 1:1000 dilution Lane 1: Human lung lysate Lane 2: Hela whole cell lysate Lane 3: HepG2 whole cell lysate Lane 4: HACAT whole cell lysate Lysates/proteins at 20 µg per lane. Secondary Goat Anti-Rabbit IgG, (H+L), Peroxidase conjugated at 1/10000 dilution. Predicted band size : 80 kDa Blocking/Dilution buffer: 5 % NFDm/TBST.



Western Blotting

Image 3. All lanes : Anti-SLC6A14 Antibody (C-term) at 1:1000 dilution Lane 1: Human lung lysate Lane 2: Human breast lysate Lysates/proteins at 20 µg per lane. Secondary Goat Anti-Rabbit IgG, (H+L), Peroxidase conjugated at 1/10000 dilution. Predicted band size : 80 kDa Blocking/Dilution buffer: 5 % NFDm/TBST.

Please check the [product details page](#) for more images. Overall 4 images are available for ABIN656900.