

Datasheet for ABIN656903  
**anti-MKL2 antibody (N-Term)**



[Go to Product page](#)

1 Image

## Overview

Quantity:	400 µL
Target:	MKL2
Binding Specificity:	AA 72-101, N-Term
Reactivity:	Mouse
Host:	Rabbit
Clonality:	Polyclonal
Conjugate:	This MKL2 antibody is un-conjugated
Application:	Western Blotting (WB)

## Product Details

Immunogen:	This MKL2 antibody is generated from rabbits immunized with a KLH conjugated synthetic peptide between 72-101 amino acids from the N-terminal region of human MKL2.
Clone:	RB32483
Isotype:	Ig Fraction
Purification:	This antibody is purified through a protein A column, followed by peptide affinity purification.

## Target Details

Target:	MKL2
Alternative Name:	<a href="#">MKL2 (MKL2 Products)</a>
Background:	MKL2 acts as a transcriptional coactivator of serum response factor (SRF). Required for

## Target Details

---

skeletal myogenic differentiation.

Molecular Weight: 118127

Gene ID: 57496

NCBI Accession: [NP\\_054767](#)

UniProt: [Q9ULH7](#)

## Application Details

---

Application Notes: WB: 1:1000

Restrictions: For Research Use only

## Handling

---

Format: Liquid

Buffer: Purified polyclonal antibody supplied in PBS with 0.09 % (W/V) sodium azide.

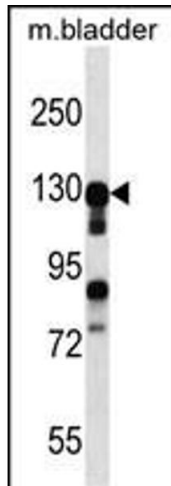
Preservative: Sodium azide

Precaution of Use: This product contains Sodium azide: a POISONOUS AND HAZARDOUS SUBSTANCE which should be handled by trained staff only.

Storage: 4 °C,-20 °C

Storage Comment: MKL2 Antibody (N-term) can be refrigerated at 2-8 °C for up to 6 months. For long term storage, place the at -20 °C.

Expiry Date: 6 months



### Western Blotting

**Image 1.** MKL2 Antibody (N-term) (ABIN656903 and ABIN2846100) western blot analysis in mouse bladder tissue lysates (35 µg/lane). This demonstrates the MKL2 antibody detected the MKL2 protein (arrow).