



[Go to Product page](#)

Datasheet for ABIN656904

anti-GRIP2 antibody (AA 620-649)

2 Images

Overview

Quantity:	400 µL
Target:	GRIP2
Binding Specificity:	AA 620-649
Reactivity:	Human
Host:	Rabbit
Clonality:	Polyclonal
Application:	Western Blotting (WB), Immunohistochemistry (Paraffin-embedded Sections) (IHC (p))

Product Details

Immunogen:	This GRIP2 antibody is generated from rabbits immunized with a KLH conjugated synthetic peptide between 620-649 amino acids from the Central region of human GRIP2.
Clone:	RB32499
Isotype:	Ig Fraction
Purification:	This antibody is purified through a protein A column, followed by peptide affinity purification.

Target Details

Target:	GRIP2
Alternative Name:	GRIP2 (GRIP2 Products)
Background:	GRIP2 may play a role as a localized scaffold for the assembly of a multiprotein signaling complex and as mediator of the trafficking of its binding partners at specific subcellular location in neurons (By similarity).

Target Details

Molecular Weight: 112573

Gene ID: 80852

NCBI Accession: [NP_001073892](#)

UniProt: [Q9C0E4](#)

Application Details

Application Notes: WB: 1:1000. IHC-P: 1:10~50

Restrictions: For Research Use only

Handling

Format: Liquid

Buffer: Purified polyclonal antibody supplied in PBS with 0.09 % (W/V) sodium azide.

Preservative: Sodium azide

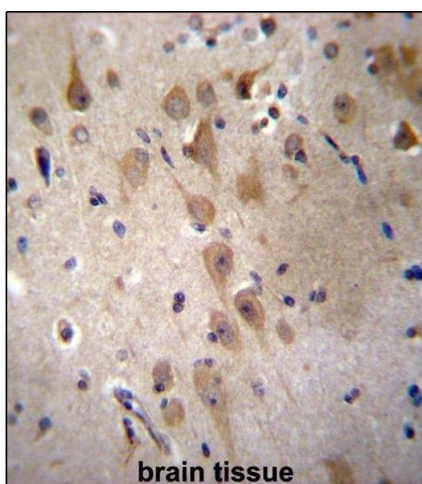
Precaution of Use: This product contains Sodium azide: a POISONOUS AND HAZARDOUS SUBSTANCE which should be handled by trained staff only.

Storage: 4 °C,-20 °C

Storage Comment: GRIP2 Antibody (Center) can be refrigerated at 2-8 °C for up to 6 months. For long term storage, place the at -20 °C.

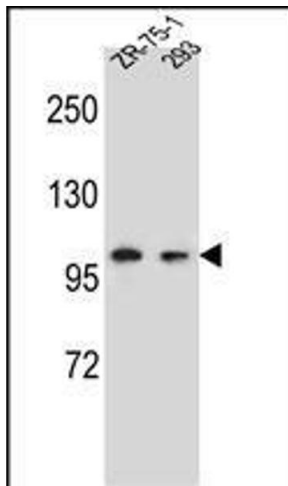
Expiry Date: 6 months

Images



Immunohistochemistry (Paraffin-embedded Sections)

Image 1. GRIP2 Antibody (Center) (ABIN656904 and ABIN2846101) immunohistochemistry analysis in formalin fixed and paraffin embedded human brain tissue followed by peroxidase conjugation of the secondary antibody and DAB staining. This data demonstrates the use of GRIP2 Antibody (Center) for immunohistochemistry. Clinical relevance has not been evaluated.



Western Blotting

Image 2. GRIP2 Antibody (Center) (ABIN656904 and ABIN2846101) western blot analysis in ZR-75-1,293 cell line lysates (35 µg/lane). This demonstrates the GRIP2 antibody detected the GRIP2 protein (arrow).