

Datasheet for ABIN656908  
**anti-GCC1 antibody (C-Term)**[Go to Product page](#)

## 2 Images

## Overview

Quantity:	400 µL
Target:	GCC1
Binding Specificity:	AA 671-700, C-Term
Reactivity:	Human
Host:	Rabbit
Clonality:	Polyclonal
Conjugate:	This GCC1 antibody is un-conjugated
Application:	Western Blotting (WB), Immunohistochemistry (Paraffin-embedded Sections) (IHC (p))

## Product Details

Immunogen:	This GCC1 antibody is generated from rabbits immunized with a KLH conjugated synthetic peptide between 671-700 amino acids from the C-terminal region of human GCC1.
Clone:	RB32510
Isotype:	Ig Fraction
Purification:	This antibody is purified through a protein A column, followed by peptide affinity purification.

## Target Details

Target:	GCC1
Alternative Name:	GCC1 ( <a href="#">GCC1 Products</a> )
Background:	The protein encoded by this gene is a peripheral membrane protein. It is sensitive to brefeldin A.

## Target Details

This encoded protein contains a GRIP domain which is thought to be used in targeting. It may play a role in the organization of trans-Golgi network subcompartment involved with membrane transport. [provided by RefSeq].

Molecular Weight: 87811

Gene ID: 79571

NCBI Accession: [NP\\_078799](#)

UniProt: [Q96CN9](#)

Pathways: [SARS-CoV-2 Protein Interactome](#)

## Application Details

Application Notes: WB: 1:1000. IHC-P: 1:10~50

Restrictions: For Research Use only

## Handling

Format: Liquid

Buffer: Purified polyclonal antibody supplied in PBS with 0.09 % (W/V) sodium azide.

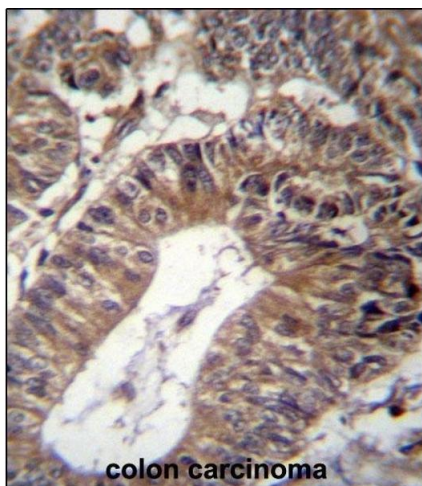
Preservative: Sodium azide

Precaution of Use: This product contains Sodium azide: a POISONOUS AND HAZARDOUS SUBSTANCE which should be handled by trained staff only.

Storage: 4 °C,-20 °C

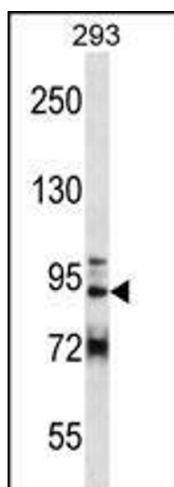
Storage Comment: GCC1 Antibody (C-term) can be refrigerated at 2-8 °C for up to 6 months. For long term storage, place the at -20 °C.

Expiry Date: 6 months



#### Immunohistochemistry (Paraffin-embedded Sections)

**Image 1.** GCC1 Antibody (C-term) (ABIN656908 and ABIN2846105) immunohistochemistry analysis in formalin fixed and paraffin embedded human colon carcinoma followed by peroxidase conjugation of the secondary antibody and DAB staining. This data demonstrates the use of GCC1 Antibody (C-term) for immunohistochemistry. Clinical relevance has not been evaluated.



#### Western Blotting

**Image 2.** GCC1 Antibody (C-term) (ABIN656908 and ABIN2846105) western blot analysis in 293 cell line lysates (35 µg/lane). This demonstrates the GCC1 antibody detected the GCC1 protein (arrow).