

Datasheet for ABIN6569165
anti-PMS1 antibody



[Go to Product page](#)

1 Image

Overview

Quantity:	200 µL
Target:	PMS1
Reactivity:	Human, Rat, Mouse
Host:	Rabbit
Clonality:	Polyclonal
Conjugate:	This PMS1 antibody is un-conjugated
Application:	Western Blotting (WB)

Product Details

Immunogen:	Recombinant protein of human PMS1
Isotype:	IgG
Purification:	Affinity purification

Target Details

Target:	PMS1
Alternative Name:	PMS1 (PMS1 Products)
Background:	Synonyms: DNA mismatch repair protein PMS1,FLJ98259,HNPCC3,hPMS1,Human homolog of yeast mutL,Mismatch repair gene PMSL1,pms1,PMS1 postmeiotic segregation increased 1 (S. cerevisiae),PMS1 postmeiotic segregation increased 1,PMS1 protein homolog 1,PMS1,PMSL1,Rhabdomyosarcoma antigen MU RMS 40.10B,Rhabdomyosarcoma antigen MU RMS 40.10E

Target Details

Background: This gene encodes a protein belonging to the DNA mismatch repair mutL/hexB family. This protein is thought to be involved in the repair of DNA mismatches, and it can form heterodimers with MLH1, a known DNA mismatch repair protein. Mutations in this gene cause hereditary nonpolyposis colorectal cancer type 3 (HNPCC3) either alone or in combination with mutations in other genes involved in the HNPCC phenotype, which is also known as Lynch syndrome.

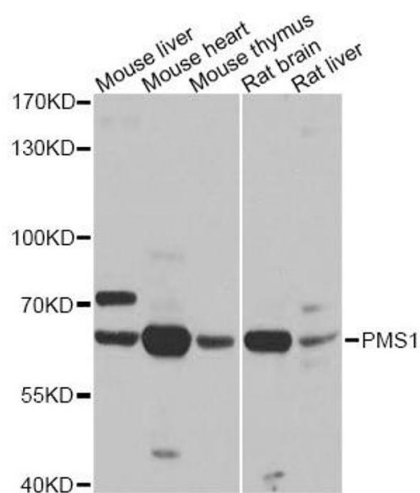
Molecular Weight:	Observed_MW: 65kDa Calculated_MW: 62kDa/86kDa/101kDa/105kDa
Gene ID:	5378
UniProt:	P54277

Application Details

Application Notes:	WB 1:500 - 1:2000
Restrictions:	For Research Use only

Handling

Concentration:	1 mg/mL
Buffer:	Buffer: PBS with 0.02 % sodium azide, 50 % glycerol, pH 7.3.
Preservative:	Sodium azide
Precaution of Use:	This product contains Sodium azide: a POISONOUS AND HAZARDOUS SUBSTANCE which should be handled by trained staff only.
Storage:	-20 °C
Storage Comment:	Store at -20°C. Avoid freeze / thaw cycles.



Western Blotting

Image 1. Western blot analysis of extracts of various cell lines, using PMS1 antibody.