



[Go to Product page](#)

Datasheet for ABIN6569193
anti-MBD2 antibody

3 Images

Overview

Quantity:	200 µL
Target:	MBD2
Reactivity:	Human, Mouse, Rat
Host:	Rabbit
Clonality:	Polyclonal
Conjugate:	This MBD2 antibody is un-conjugated
Application:	Western Blotting (WB), Immunohistochemistry (IHC)

Product Details

Immunogen:	Recombinant protein of human MBD2
Isotype:	IgG
Purification:	Affinity purification

Target Details

Target:	MBD2
Alternative Name:	MBD2 (MBD2 Products)
Background:	<p>Synonyms: Demethylase,DMTase,MBD 2,Mbd2,MBD2,MBD2a,Methyl CpG binding domain protein 2,Methyl CpG binding protein MBD2,Methyl-CpG-binding domain protein 2,Methyl-CpG-binding protein MBD2,NY CO 41</p> <p>Background: DNA methylation is the major modification of eukaryotic genomes and plays an essential role in mammalian development. Human proteins MECP2, MBD1, MBD2, MBD3, and</p>

Target Details

MBD4 comprise a family of nuclear proteins related by the presence in each of a methyl-CpG binding domain (MBD). Each of these proteins, with the exception of MBD3, is capable of binding specifically to methylated DNA. MECP2, MBD1 and MBD2 can also repress transcription from methylated gene promoters. The protein encoded by this gene may function as a mediator of the biological consequences of the methylation signal. It is also reported that the this protein functions as a demethylase to activate transcription, as DNA methylation causes gene silencing. Two transcript variants encoding different isoforms have been found for this gene.

Molecular Weight:	Observed_MW: 53kDa Calculated_MW: 31kDa/43kDa
-------------------	--

Gene ID:	8932
----------	------

UniProt:	Q9UBB5
----------	------------------------

Pathways:	Chromatin Binding
-----------	-----------------------------------

Application Details

Application Notes:	WB 1:200 - 1:2000 IHC 1:50 - 1:200
--------------------	------------------------------------

Restrictions:	For Research Use only
---------------	-----------------------

Handling

Concentration:	1 mg/mL
----------------	---------

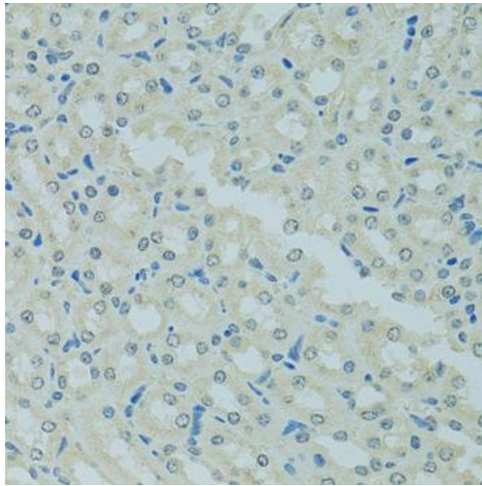
Buffer:	Buffer: PBS with 0.02 % sodium azide, 50 % glycerol, pH 7.3.
---------	--

Preservative:	Sodium azide
---------------	--------------

Precaution of Use:	This product contains Sodium azide: a POISONOUS AND HAZARDOUS SUBSTANCE which should be handled by trained staff only.
--------------------	--

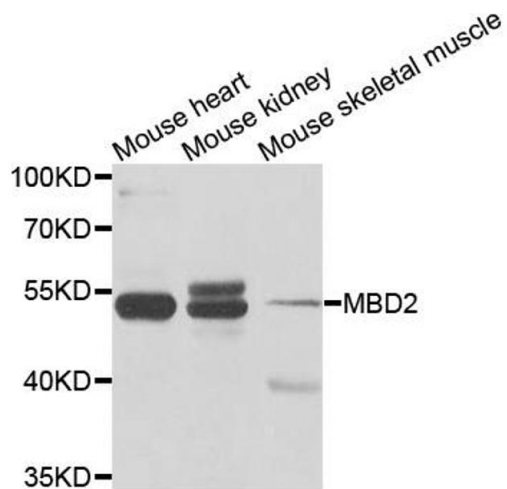
Storage:	-20 °C
----------	--------

Storage Comment:	Store at -20°C. Avoid freeze / thaw cycles.
------------------	---



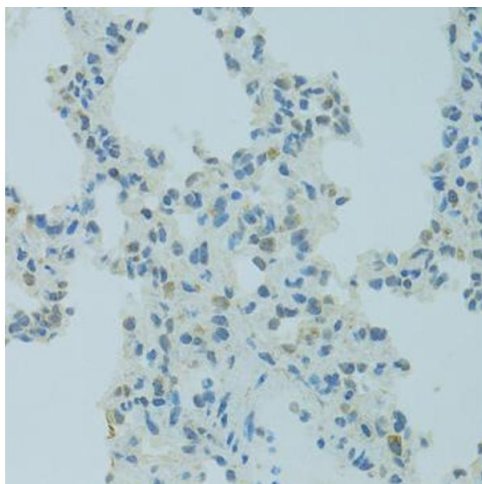
Immunohistochemistry

Image 1. Immunohistochemistry of paraffin-embedded mouse kidney using MBD2 antibody.



Western Blotting

Image 2. Western blot analysis of extracts of various cell lines, using MBD2 antibody.



Immunohistochemistry

Image 3. Immunohistochemistry of paraffin-embedded rat lung using MBD2 antibody.